

□ Smyslov, Vassily V
 ■ Kotov, A....
 Campeonato de Moscu 1943
 [Van der Brule, Alvaro]

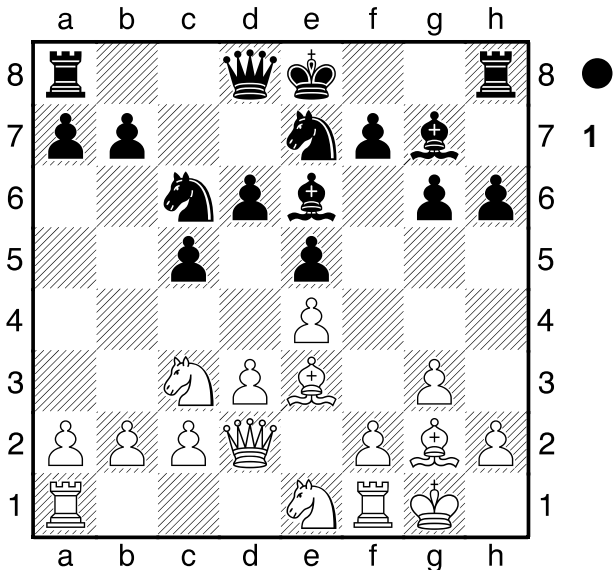
Vasily Smyslov was the seventh world chess champion (1957-1958). Smyslov was known for his strong positional style and machine-like technical skills in the endgame. He was not a one-dimensional player, as he could also throw spectacular tactical combinations into his games. 1.e4 c5 2.♘f3 ♘c6 3.g3 g6 4.♗g2 ♗g7 5.d3 d6 6.♘c3 White somewhat diverts from the known theoretical paths, since, in the closed variation of the Sicilian Defence, the knight is usually unleashed via d2. 6...e6 7.♗g5!?

[7.0-0 ♗ge7 8.♗e3 ♘d4 9.♖d2 0-0 10.♗h6]
 7...♗ge7
 [7...f6]

8.♖d2 Initiative that pretends to exchange the bishops with 9.Bh6. 8...h6 Black avoids the threat, but is left with castling difficulties, a fact that is reflected in the plans of both players.

[8...0-0 9.♗h6]

9.♗e3 e5 To develop the white squared bishop, which makes Smyslov afterwards begin the kingside weakening. 10.0-0 ♗e6 11.♘e1



To eventually open the "f" column by advancing the pawn to "f4". 11...♖d7 12.a3 Preparing "b4", in case Black performs the long castling. 12...♗h3

[12...0-0-0 13.b4 Taking advantage of the rupture point on c5. White has attack.]

13.f4! The kingside weakening begins, as well as protecting the bishop on "g2". 13...♘d4 14.♖b1 A move that shows how Smyslov does not neglect his opponent's plans and places his rook with a plan to damage a possible long Black castling. 14...exf4

[14...0-0-0 15.b4! A STRATEGY TO REMEMBER IF BLACK CASTLES LONG IN THE CLOSED POSITION.]

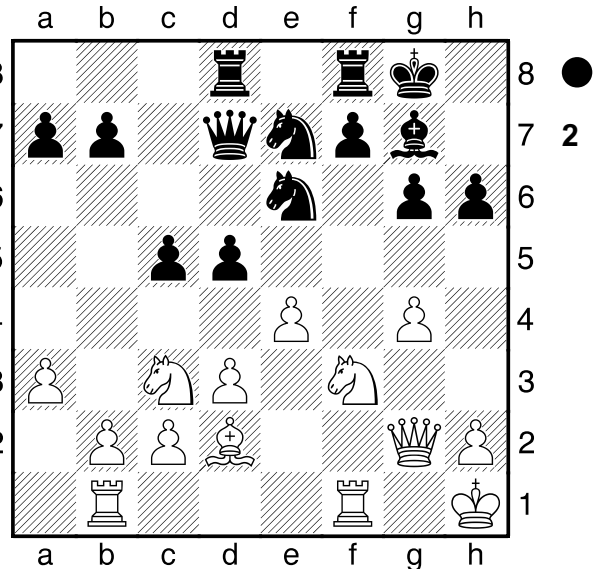
15.♗xf4 ♗xg2 16.♖xg2

[16.♗xg2 ♘ec6 (16...g5 17.♗e3 g4 18.♗h4)

B25

17.♗e3 g5]

16...0-0 After Black has finally castled, White prepares an immediate attack against the opponent's King. 17.g4 Classic in the closed position: Advance the castling pawns with the pieces behind. 17...♗ad8 18.♗h1 ♘e6 19.♗d2 d5 20.♗f3



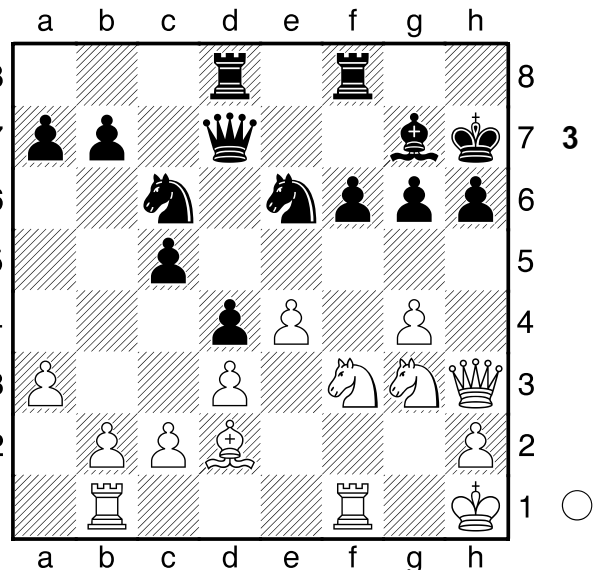
d4? Black blocks the centre, which only favours White's intentions, as it will now be easier to attack on the kingside with the fixed pawn centre.

[20...dxe4 21.♗xe4 ♘d4 The correct way would be]

21.♗e2 ♘c6 22.♖h3 ♗h7 Defends the "h6" pawn, but places the King on the column where a Queen is, which is not advisable as we shall see. 23.♗g3 In the Closed game, we accumulate pieces on the kingside, which serve for both attack and defence.

[23.♗xh6?! It is always in the air, but here it works worse. ♗xh6 24.g5 ♘xg5 25.♗xg5+ ♗g7 26.♖g3 ♗xg5 (26...♖e7 27.♖g1 ♗xg5 28.♖xg5 ♖xg5 29.♖xg5 c4) 27.♖xg5 f6 28.♖g3 ♖h8]

23...f6



24.♗f5!! A beautiful exchange which wrecks the black defensive position! Let us yield to Smyslov's words to

better understand the depth of this move: "White is advised to momentarily forget the desire to regain the piece and instead gradually increase the power of the attack. For this it is not necessary to calculate deep combinations, but to rely on the player's appreciation of the position, based on general principles". **24...gxf5**

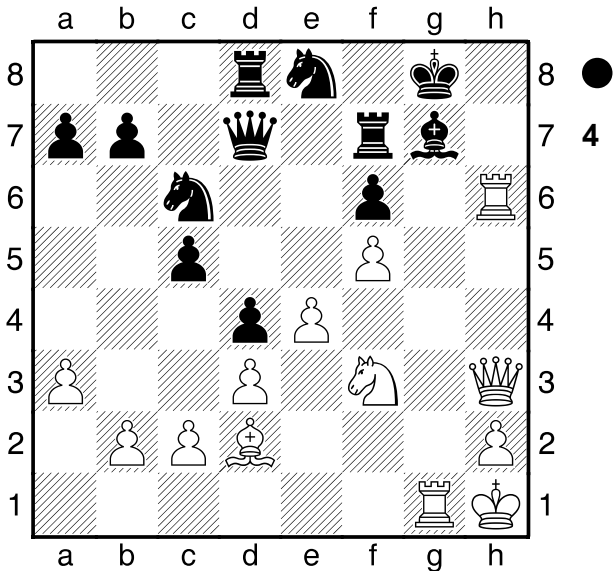
25.gxf5 ♖c7 The only square available.
 [If 25...♗g5 other exchanges would follow, such as 26.♕xg5 fvg5 27.♗xg5+ and then 28.Ne6 gaining quality and with a quick ending.]

26.♖g1 ♗e8 Avoiding the combination 27.Rxg7+ Kxg7 28. Rg1+ Kf7 29. Qh5+ Ke7 30.Rg7+ etc.

[Another failing defence is 26...♖h8 because it would follow a decisive combination by the following means 27.♗xh6 ♗xh6 (No 27...♗g8? 28.♖xg7+ ♗xg7 29.♖g1 ♗xg1+ 30.♗xg1) 28.♖g6 ♗g7 29.♖xg7+ ♗xg7 30.♗g3+ and then 31.Qxc7.]

[26...b6 27.♖xg7+ ♗xg7 (27...♗xg7 28.♖g1+ ♗f7 29.♗h5+ ♗e7 30.♖g7+ ♗d6 31.♖xd7+) 28.♖g1]

27.♖g6 ♖f7 **28.♖bg1** ♗g8 **29.♖xh6**

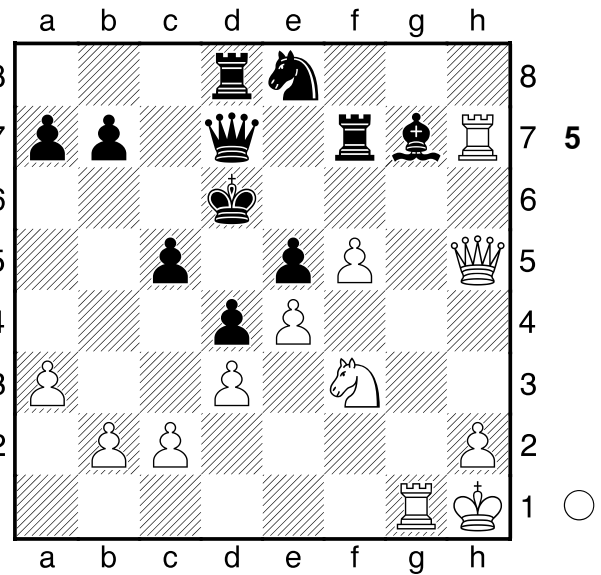


♗f8 Avoiding mate and looking for an escape to the queenside. **30.♖h7** ♗e7 **31.♗h5** ♗d6 The King of Black continues his marathon look for a safe place!

32.♗f4+ ♗e5 The only way to survive a little longer.
 [If 32...♗e7 33.♗g5 (33.♗g5 fvg5 34.♗xg5+) 33...fxg5 34.♗xg5+ but even so, White performs a movement that gives the attack a new vigour.]

33.♗xe5+! fxe5

(Diagrama 5)



34.f6! White's attack reaches a climax, based on Black's pinned piece problems.

[34.♖g6+ ♗c7 35.♗g5 ♖e7 36.♗e6+ ♗c8 37.♗xd8 ♗xd8 38.♗g5]

34...♗xf6

[34...♖xf6 35.♖hxg7 ♗xg7 36.♗xe5+ ♗c6 37.♗xf6+]

35.♗xe5+ ♗c6 **36.♖hxg7** ♗b5 **37.♗xd4+!** ♗b6

[If 37...♗xd4 38.♗xd4 cxd4 39.♖xf7 deciding.]

38.b4! Black's escape attempt has failed, as he has been chased even on the queenside! This old rupture when black takes the king to the queenside! **38...♖c8**

[Unplayable 38...cxd4 due to 39.♗c5+ ♗a6 40.♗a5#]

39.♖xf7 ♗xf7 **40.♗d6+** ♖c6 **41.♗xc6** ♗xe4

42.bxc5+ Si

[42.bxc5+]
 [42.♗e5+ ♗xd6 43.♗xf7 ♗xf7 44.h4]

42...♗b5 **43.♖b1+** ♗a4 **44.♗d4+** ♗xa3 **45.♗a1+** ♗a2 **46.♖b3+** ♗a4 **47.♗xa2#** A ruthless hunt for the black king from g8 to a4!

1-0