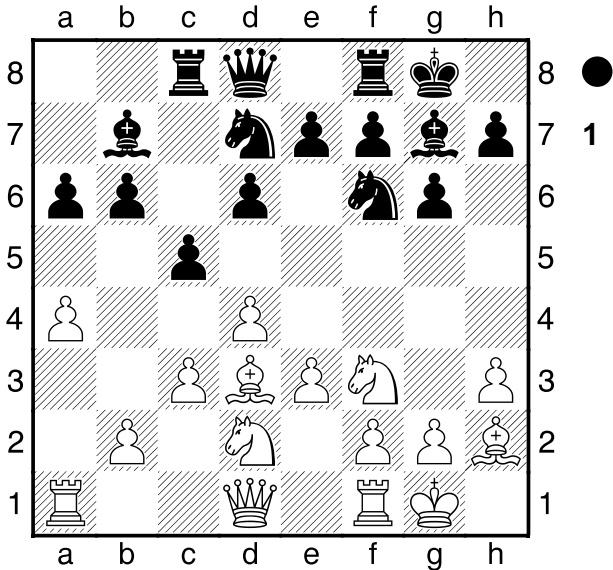


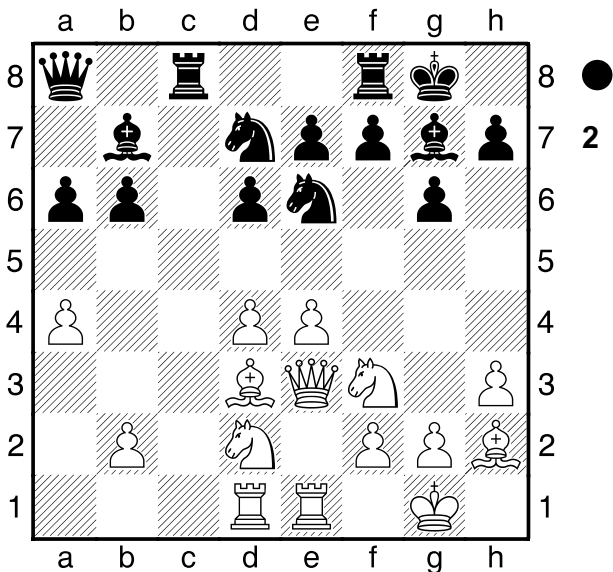
□ Faizulaev, Akmal1
 ■ Khusnutdinov, Rustam
 Abu Dhabi Germany
 [Moreno Ruiz, J]

A48
 2396
 2478
 2016

1.d4 ♘f6 2.♗f3 g6 3.♙f4 ♙g7 4.h3 d6 5.e3 0-0
 6.♙e2 c5! This move is considered the best. 7.c3
 IN EFFECT. The move Pc3 is REACTIVE, only to be
 made when black has played Pc5. 7...b6 8.0-0 ♗b7
 Black tests the double fianchetto plan, which is
 extremely solid against the London system. 9.♗bd2
 ♗bd7 10.a4 a6 11.♙h2 ♖c8 12.♙d3!

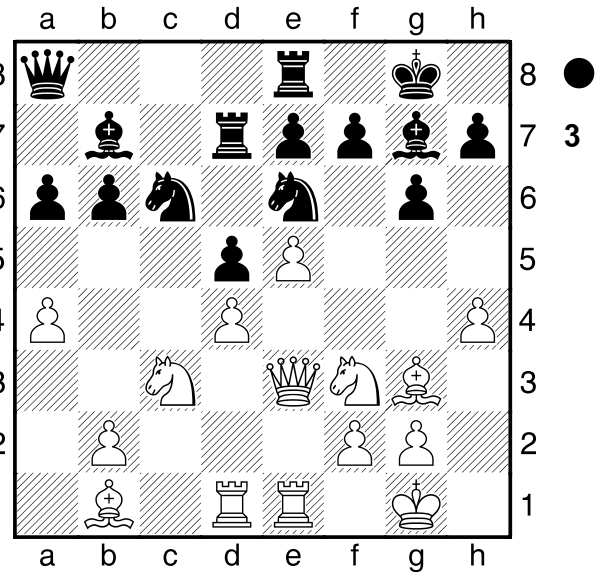


IS THE FASHIONABLE TREND. White wants to support
 Pe4, and KEEP A HEALTHY CENTRE.
 In general, against black's Pd6-based schemes it is
 good to prepare Pe4, and keep the centre, taking
 advantage of black's slowness. 12...♖c7 13.♙e2 ♙a8
 14.e4 cxd4 15.cxd4 ♖cc8 16.♙fe1 ♗e8 17.♖ac1
 ♗c7 18.♙e3 ♗e6 19.♖cd1

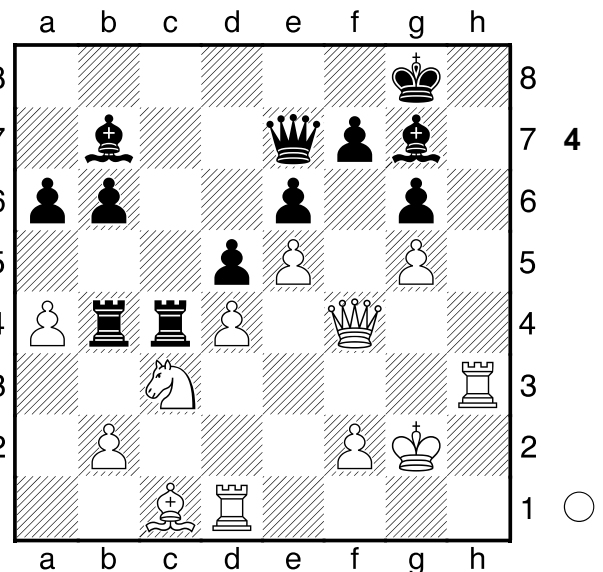


It avoids changes, and as the black one has no entries
 through the column... 19...♖fd8 20.♗b1! d5?!

Pierde la paciencia el negro. esto permite pasar a una
 posicion tipo francesa en excelentes condiciones. 21.e5
 ♗b8 22.♗c3 ♗c6 23.♙b1 ♖d7 24.♙g3 ♖e8 25.h4!



WHITE INITIATES AN ATTACK ON THE KINGSIDE
 EXPLOITING HIS SPACE ADVANTAGE IN THIS
 SECTOR. 25...h5 26.♗g5 ♗xg5 27.hxg5 e6 28.♙f4
 ♙d8 29.♙h3 ♙e7 30.♗a2 ♖c8 31.g4 hxg4 32.♙xg4
 ♗b4 33.♗c3 ♖c4 34.♙c1 ♗c6 35.♙a2 ♖b4 36.♙f4
 ♗a5 37.♖d3 ♖c7 38.♖ed1 ♗b3 39.♙xb3 ♖xb3
 40.♖h3 ♖b4 41.♗g2 ♖cc4



42.♙f6!! THE CULMINATION OF THE ATTACK ON
 THE KING'S SIDE!!! 42...♙xf6
 [42...♙xf6 43.gxf6]
 43.gxf6 ♖xd4 44.♖xd4 ♖xd4 45.fxg7 ♗xg7 46.♙h6+
 ♗g8 47.♗f1 g5 48.♙xg5 ♗g7 49.♙f6+ ♗g6
 50.♖g3+ ♗f5 51.♖g5+ jmorenoruiz70@gmail.com
 1-0