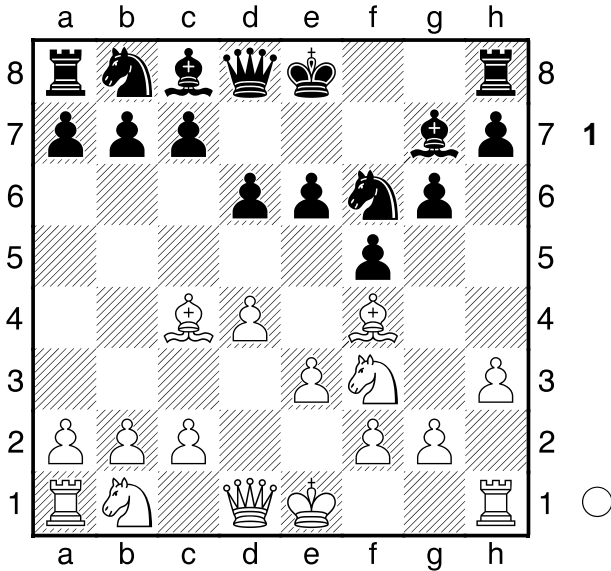


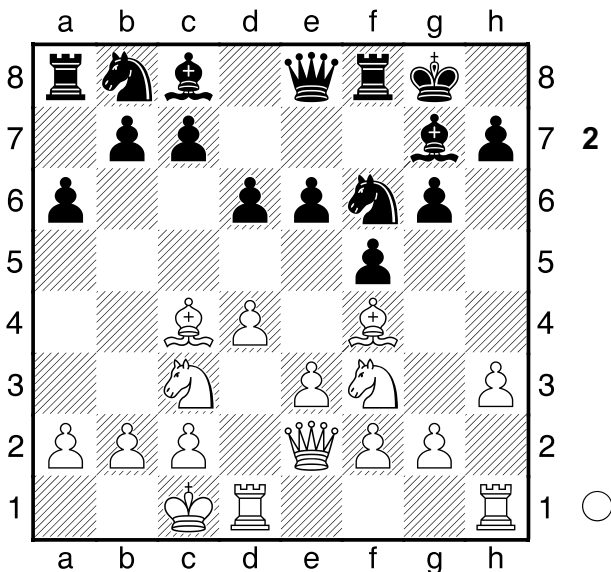
□ Parker,J
 ■ Schmidt,loan
 Cologne
 [Moreno Ruiz,J]

A80
 2288
 2150
 10.11.2009

1.d4 f5 The Dutch is a risky opening, as Black creates weaknesses on the kingside from the first move. This gives White attacking motives. 2.g4! f6 3.e3 g6! BEGINNING OF THE MOST AGGRESSIVE DUTCH, which is the Leningrad variant. 4.h3 g7 5.f3 d6 6.g4! e6

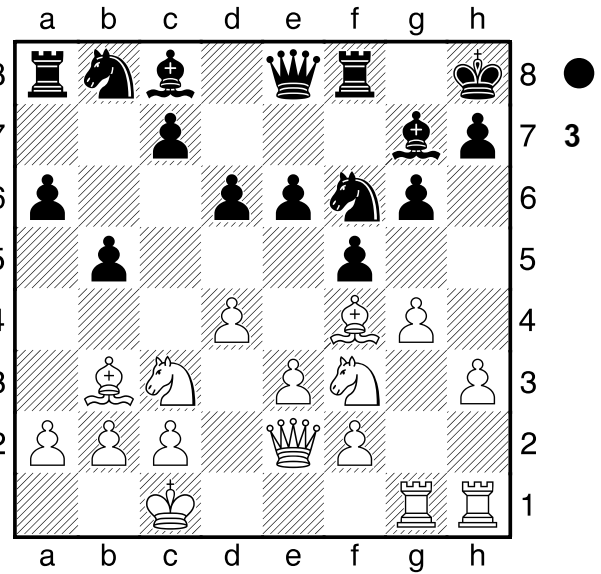


Now White has an aggressive plan with Nc3, De2, 0-0-0, and g4, which is very promising, as White's attack goes very fast because of the backward development and the already weakened kingside. 7.c3 0-0 8.e2 e8 9.0-0 a6

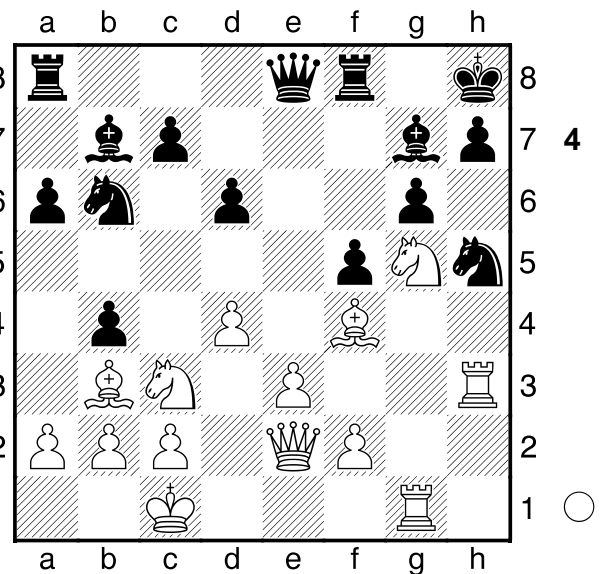


10.g4! A slightly slow move. IN OPPOSITE CASTLES SPEED IN ATTACK IS ESSENTIAL, and preparatory moves can be omitted. [d10.g4]
 10...b5 11.g3 Este alfil es necesario en la variante

agresiva de ataque al rey. Ademas retrasa e5. 11.g4 [11...b4 12.g4] 12.g4



IDEAL WHITE SCHEME AGAINST THE DUTCH LENINGRAD. 12...bd7 13.gxf5 exf5 14.g5 b6 15.h4 b7 16.f3 b4 17.h5 f6 18.f6 cxb2+ (18...f6 19.hxg6#) 19.g4 f6 20.hxg6]



18.f6!! DEMOLITION SACRIFICE. 18...f6 19.g6 f6 [19...g6 20.f6+ f6 21.g5#] 20.f6+ f6 21.f6+ f6 22.f6 f6 23.f6+ f6 24.f6 cxb6 25.f3 f6 26.f6 [26...f6 27.g3+ f6 28.f4 f6 29.g5+ f6 30.f6+ f6 31.a3 a5 32.f6+ f6 33.f6] 27.f6+ jmorenoruiz70@gmail.com 1-0

□ Bell, Stephen
 ■ Smith, Alan A
 Coventry
 [Moreno Ruiz, J]

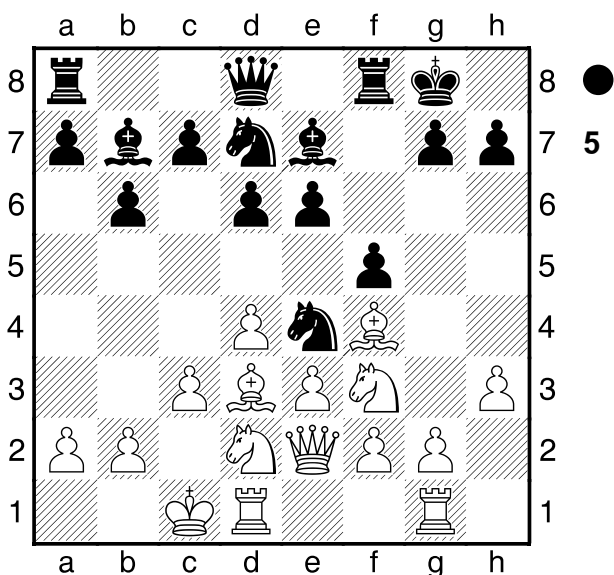
A80
 2379
 2215
 05.12.2011

♟xd2 17.♞xd2 ♘d5 18.♙h2 ♞ae8
 [18...hxg5?! 19.hxg5 c5 (19...g6 20.e4→) 20.g6
 ♙g8 21.dxc5 bxc5 22.e4]
 19.e4 ♙d8 20.♞g2 ♘e3 21.♞h3 ♙c8 22.e5 f4 23.e6
 ♞a4 24.d5 ♞xa2 25.♙f7+

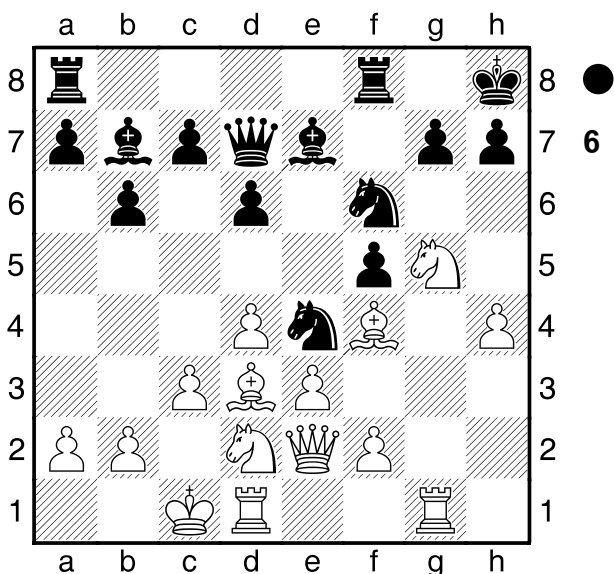
1.d4 f5 2.♙f4 ♘f6 3.e3 d6 4.♙f3 e6 5.h3 ♙e7
 [5...g6 6.♙c3 ♙g7 7.♙c4 (7.♙d3 a6) 7...a6 8.♞e2
 b5 9.♙b3 THIS IS THE BEST SCHEME AGAINST
 FIANCHETTO.]

RR6.♙d3! This is the recommended line. White is going
 to prepare 0-0-0, and then Pg4, and the bishop is
 already in an ideal attacking position. Black's Pe5 is
 slow and not so effective.

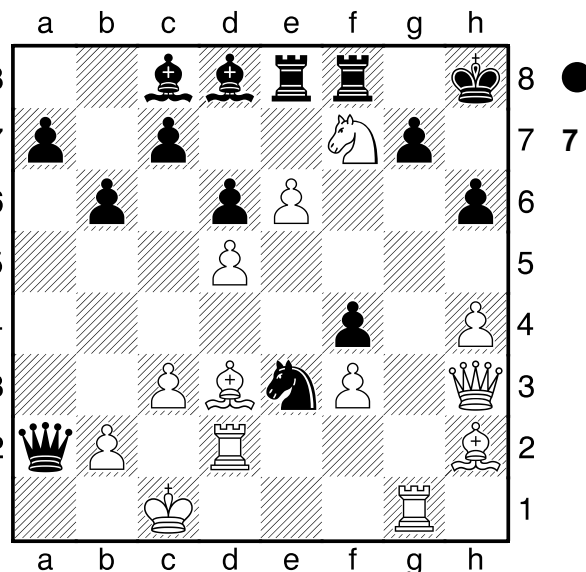
[♞6.♙c4 d5 7.♙e2]
 6...b6 7.♙bd2 ♙b7 8.c3 0-0 9.♞e2 ♘e4 10.0-0-0
 ♙d7 11.♞hg1



♙df6 12.g4 ♘h8 13.gxf5! exf5 14.h4 ♞d7
 [14...♙d5 15.♙g5 ♘xg5 16.hxg5 ♙xf4 17.exf4→]
 15.♙g5!



WHITE'S MODEL STRUCTURE AGAINST THE
 CLASSICAL DUTCH, with ...e6 and ...d6 15...h6 16.f3



White's attack is now devastating. 25...♙g8
 [25...♞xf7 26.exf7 ♞f8 27.♞xc8 ♞a1+ 28.♙b1]
 26.♙xf4+- ♞a1+ 27.♙b1± ♙c4
 [27...♞xf7 28.exf7+ ♙xf7 29.♞xc8+-]
 28.♞xg7+ ♙xg7 29.♙xh6+ ♙f6 30.♞f5+ ♙e7
 31.♙g5# jmorenoruiz70@gmail.com
 1-0