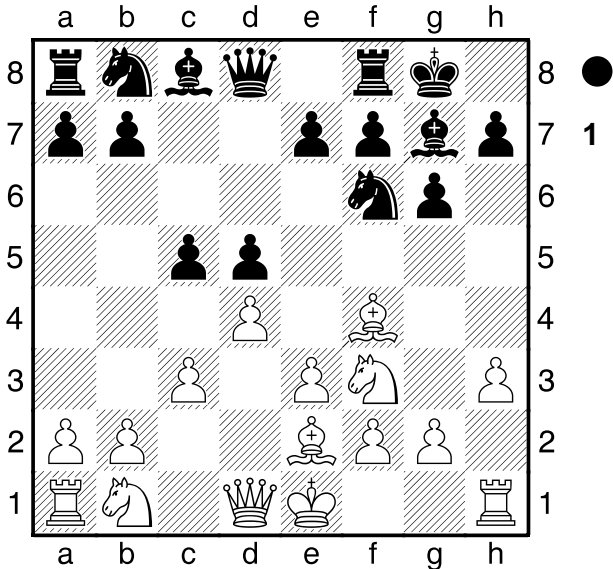


□ Grachev, Boris
 ■ Rakhmanov, Alexander
 Moscow op (6)
 [Moreno Ruiz, J]

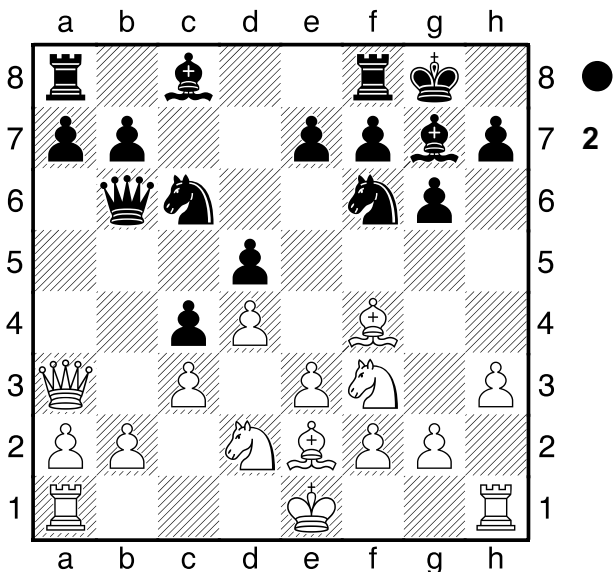
D02
2563
2473
 01.02.2007

1.d4 ♘f6 2.♗f3 g6 3.♙f4 ♙g7 4.e3 0-0 5.♙e2 d5
 6.h3 c5 7.c3



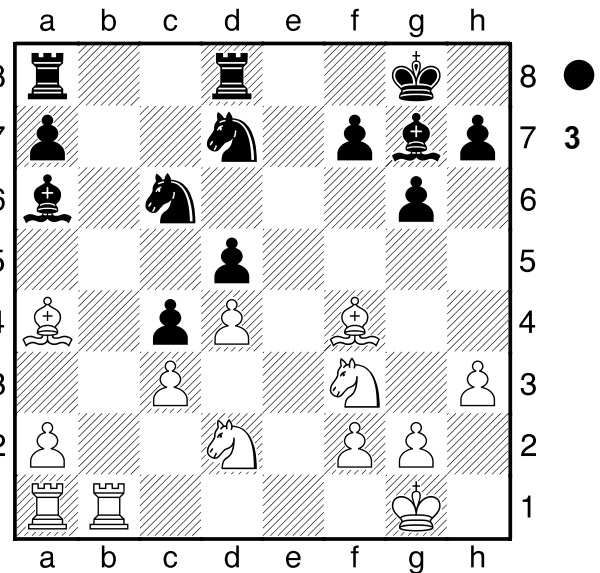
THE GRUNFELD SYSTEM. A system characterised by a certain passivity and because the black position does not seem suitable for undertaking any concrete plan. White must start his typical actions on the queenside, with the added advantage of the e5-square, and the strength of Af4 on a free diagonal, which facilitates his task in this sector. 7...♙b6

[7...♗c6 8.0-0 ♖e8 9.♗bd2 ♗d7 10.♙h2 e5 11.♗b3!±]
8.♙b3! ♗c6 9.♗bd2 c4
 [9...♙xb3 10.axb3 cxd4 11.exd4 a6 12.b4 ♙f5 13.0-0 ♖fe8 14.♗b3 With the typical pressure on the queenside. This manoeuvre is already familiar to us.]
10.♙a3!



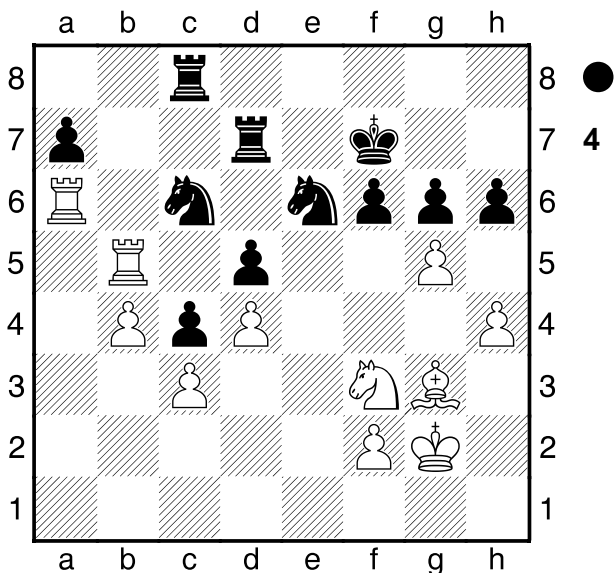
A manoeuvre worth remembering. Taking advantage of the absence of the bishop on the f8-a3 diagonal, the queen here is magnificently placed for the fight on the queenside, and the preparation of the breaks Db3 and Pe4, which we already know are thematic when Black plays Pc4. 10...♙d8

[10...♙f5 11.b3 cxb3 12.axb3 ♗d7 13.g4! ♙e4 (13...♙e6 14.♗g5±) 14.♗xe4 dxe4 15.♗d2 e5 16.♙g3 f5 17.♗c4 ♙d8 18.gxf5 gxf5 19.d5 ♗cb8 20.♖g1 f4 21.♙h2 ♗a6 22.0-0-0 ♗ac5 23.♗b1 b5 24.♖xg7+ ♗xg7 25.♖g1+ ♗h8 26.♗xe5± 1-0 Kolev, A (2568)-Laylo, D (2496)/Las Vegas 2008/CBM 124 Extra (73)]
11.b3 b5 12.0-0 ♗d7
 [12...♙f5 13.♗e5 ♗xe5 14.♙xe5 (14.dxe5 ♗d7 15.♗f3 e6) 14...♖e8 15.bxc4 bxc4 16.♙f3]
13.bxc4 bxc4 14.e4! e6 15.♙d6! ♗db8 **16.♙xd8 ♖xd8 17.♖fb1 ♙a6 18.♙d1**
 [18.♗e5 ♗xe5 19.dxe5 ♗c6]
18...♗d7 19.exd5 exd5 20.♙a4



White has made both breaks, and now has a comfortable advantage because of the initiative on the queenside, but he will have to work hard to break the solid but passive black defence. 20...♖ac8 21.♙b5 ♙xb5
 [21...♙b7 22.♙xc4 dxc4 23.♖xb7]
22.♖xb5 ♗f8 23.g4 ♗e6 24.♙g3 ♖d7 25.♖e1 h6 26.♗f1 ♗h7 27.♗g2 ♙f6 28.♗e3 ♖cd8 29.♗c2 ♖e8 30.a3!
 A great plan. Black has managed to avoid immediate disaster at the cost of passivity, but the next white plan will increase his problems. **30...♙e7 31.♗b4 ♙xb4 32.axb4 f6 33.♖a1 ♗g7 34.h4 ♗f7 35.♖a6 ♖c8 36.g5!**

(Diagrama 4)



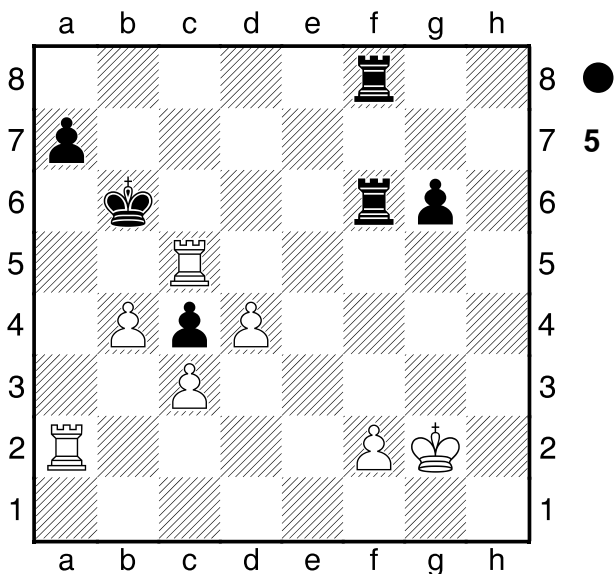
EXCELLENT. The break on both flanks is a thematic method of exploiting advantages of activity in the endgame, as Alekhine often did. Now Black will not be able to defend weaknesses on both flanks at the same time. 36...hxg5 37.hxg5 ♖xg5

[37...fxg5 38.♖xc6 ♖xc6 39.♗e5+]

38.♗xg5+ fxg5 39.♖c5 ♗e7 40.♗e5 ♖f8 41.♖ca5 ♖a8 42.♖a1 ♖b7 43.♖h1

[43.♖f1 ♖g8 44.f4 g4 45.♔g3 ♗f5+ 46.♔xg4]

43...♖b6 44.♖ha1 ♗c8 45.♖6a5 ♔e6 46.♖e1 ♗d6 47.♗xd6+ ♔xd6 48.♖e5 ♖f8 49.♖xg5 ♔c7 50.♖gxd5 ♖bf6 51.♖a2 ♔b6 52.♖c5



Excellent positional work by young Grachev. 52...♖c6 53.♖xc6+

[53.♖a6+ ♔xa6 54.♖xc6+ ♔b5 55.♖c5+ ♔a4 56.♖xc4 ♔b3 57.♖c6]

53...♔xc6 54.♖xa7 jmorenoruiz70@gmail.com

1-0