

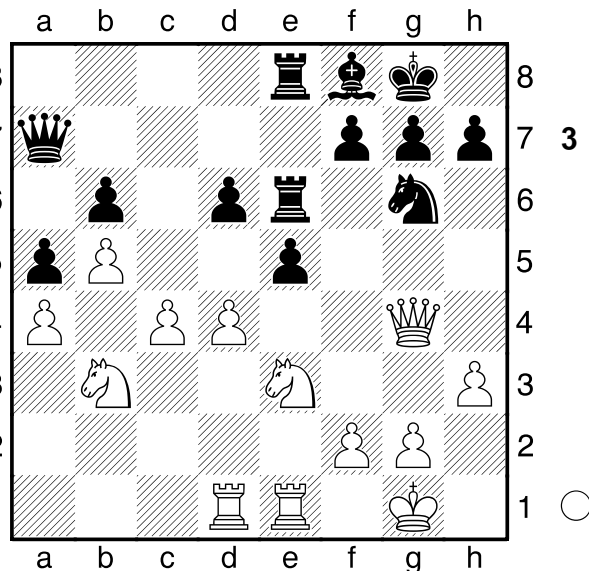
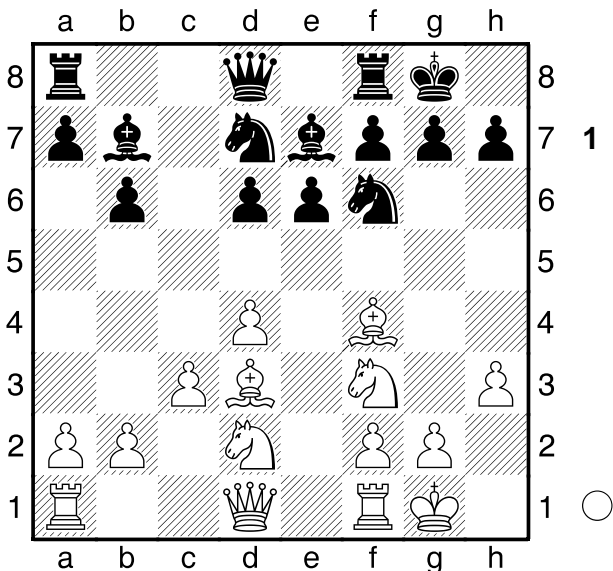
□ Bronstein, David
 ■ Sokolov, Andrei
 G38 Moscow-ch
 [Moreno Ruiz, J]

A47

1.d4 ♘f6 2.♗f3 e6 3.c3 b6 4.♙f4 ♖b7 5.♗bd2 ♙e7
 6.h3 0-0 7.e3 c5 8.♙d3 cxd4!? 9.exd4 d6 10.0-0
 ♗bd7

1982

essential passivity of black's play, although always within solidity, white carries out an AVALANCHE OF PAWNS ON THE QUEEN FLANK, which will force him to create weaknesses. Meanwhile Black continues to wait passively. 18...a5 19.b5 ♙d7 20.♙e2 e5 21.♗b3 ♜b8 22.♞c1 ♗e4 23.♙g4 ♙xg4 24.♜xg4 ♗xg3 25.♜xg3 ♙f8 26.♜f3 ♞e6 27.♞cd1 ♜a7 28.♜g4 ♞ce8

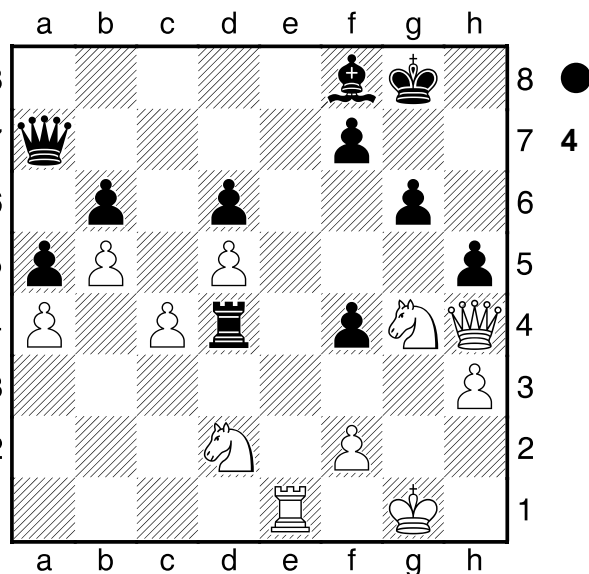
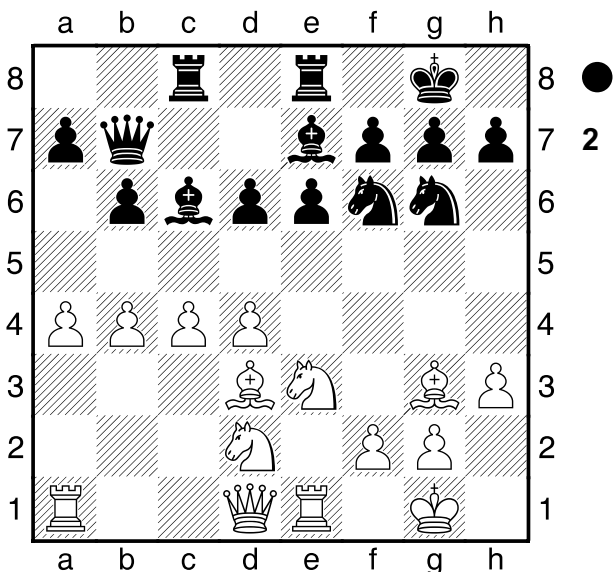


ESSENTIAL OUTLINE OF THE LONDON-INDIAN QUEENSIDE. The Black Pawn on d6 removes White from his classical attacking plans on the kingside, and leaves the Black position very solid, but with a small problem: BLACK'S POSITION IS RESTRICTED AND LETS WHITE GAIN SPACE WITHOUT PROBLEMS ON THE QUEEN'S WING. 11.♗c4 ♜c7 12.♞e1 ♞fe8 13.♙g3 ♗f8 14.♗fd2! ATTENTION TO THE MANOEUVRES OF THE KNIGHTS. They look for suitable squares for the projected attack on the queenside. 14...♙c6 15.a4 ♗g6 16.♗e3 ♜b7 17.b4! ♞ac8 18.c4±

The white position is very promising, and I had several options. 29.d5!?

[29.c5! bxc5 30.dxc5 dxc5 31.♜e4 ♗f4 32.♗d5 ♗xd5 33.♞xd5 ♜c7 34.♞c1±]

29...♞f6 30.♗d2 ♞f4 31.♜e2 ♞d4 32.g3 Black's quality is trapped. There is no defence against c2, so black starts to complicate matters. 32...♗f4 33.gxf4 exf4 34.♜g4 h5 35.♜h4 g6 36.♗g4! ♞xe1+ 37.♞xe1



hgx4 38.♗e4!± ♞xe4 39.♞xe4 gxh3 40.♜d8+- f5 41.♞e8 ♜f7 42.♞e6 ♗g7 43.♗h2 f3 44.♜g5 ♗h7 45.♗xh3

A strategically exemplary game.
 jmorenoruiz70@gmail.com
 1-0

WHITE'S ESSENTIAL PLAN. Taking advantage of the