

B38

□ Geller, Efim P

■ Larsen, Bent

Monaco Grand Prix-01 GM (10)

03.04.1967

[MI Javier Moreno Ruiz]

Here the great Larsen, a world-class player in the 1960s, gives a lesson to a strong opponent on how to use the best pawn structure in the endgame.

THEME: PAWN ISLANDS. 1.♖f3 c5 2.c4 g6 3.d4

cxd4 4.♗xd4 ♗g7 5.e4 ♖c6 6.♗e3 d6 7.♗e2

♗h6!? One of Larsen's original ideas. 8.0-0 0-0

[8...f5!]

9.♗d2 ♗g4 10.♗xg4 ♗xg4 11.♖c3 ♗a5 12.♗c1

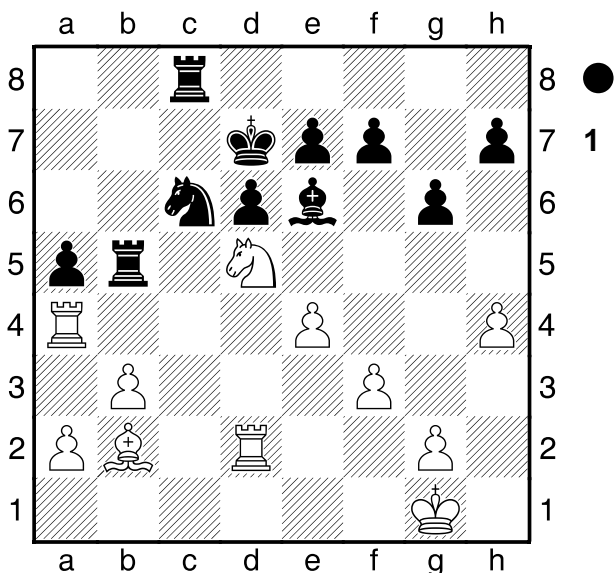
♗fc8 13.b3 a6 14.♗c2 b5 15.♗d5 ♗xd2 16.♗xd2

♗xd4 17.♗xd4 ♗ab8 18.♗c1 ♗f8 19.♗b2 bxc4

20.♗xc4 ♗e8 21.♗dc2 ♗d7 22.f3

[22.♗e3 ♗e6 23.♗a4 Larsen]

22...♗e6 23.♗d2 a5 24.h4 ♗b5 25.♗a4



Black has a slight advantage, in this position arising from a Sicilian defence. Their pawn structure is more solid, and the black king is more centralised than his opponent. 25...f6! A deep move, the meaning of which escapes White. 26.♗h2?! Allowing for the black idea.

[26.♗e3]

26...♗xd5! 27.♗xd5

[27.exd5 ♗b4]

27...♗xd5 28.exd5 ♗b4 29.♗xa5 ♗c2 30.a3 ♗xb2

31.axb4 ♗xb3

(Diagrama 2)

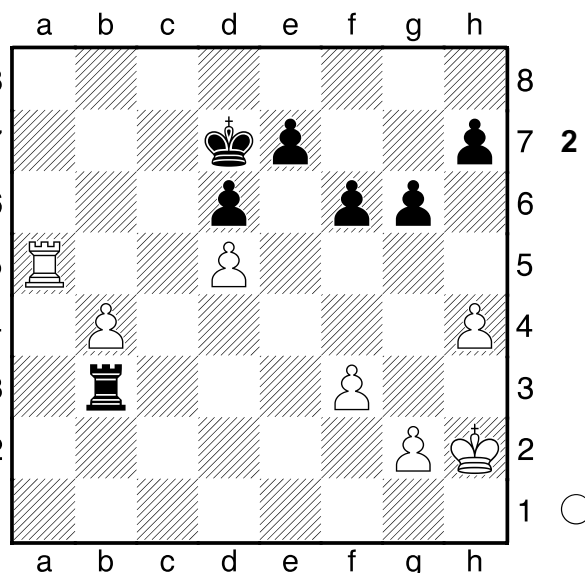
This was the end the black wanted to reach. The bad structure of white pawns, with their pawns divided into three islands, while the white one has only one.

Now the sense of f6 is manifested, as the black king has a refuge on f7. To realize these advantages in a whole point requires good technique. 32.♗a7+

[32.♗b5 ♗c7]

32...♗e8 33.♗a8+ ♗f7 34.♗b8 ♗d3 35.♗b5 ♗d4

The white rook is immobilised. 36.♗g3 g5! Making way for the black king. The white pieces are very passive, as



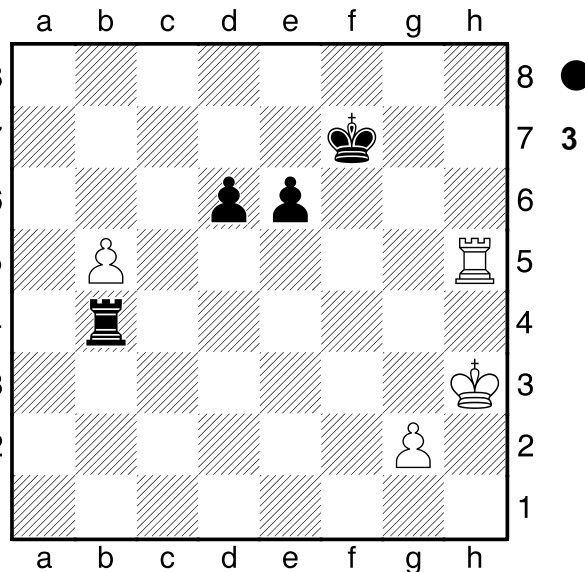
a result of their weaknesses. 37.hxg5 fxg5 38.♗f2 ♗d2+ 39.♗g3 h5 40.♗h3 ♗d3 41.♗g3 ♗f6 42.♗f2 ♗d2+ 43.♗g3 ♗d4

[43...h4+! 44.♗h3 ♗e2 45.♗b8 ♗e5 46.♗b5 e6]

44.♗h3 g4+ 45.fxg4 ♗xg4 46.♗b8 ♗d4 47.♗b5 ♗e4

48.♗b8 ♗e5! The winning plan. 49.♗b5 e6 50.♗b8

♗xd5 51.b5 ♗d4 52.♗h8 ♗b4 53.♗h6+ ♗f7 54.♗xh5



An interesting ending, but Black has a great advantage with his central linked pawns.

Again, the best pawn structure is decisive! 54...♗g6

55.g4 d5 56.♗e5 ♗f7 57.♗h4 ♗xb5 58.♗e1 d4

59.♗a1 ♗f6 60.♗a8 ♗d5! The rook behind the last

pawn. The rest is straightforward. 61.♗g3 d3 62.♗a1

♗e5 63.♗f2 ♗d4 64.♗a7 e5 65.g5 e4 66.♗a4+ ♗e5

Coronation or the loss of a second pawn is inevitable.

Madrid August 2020

jmorenoruiz70@gmail.com

0-1