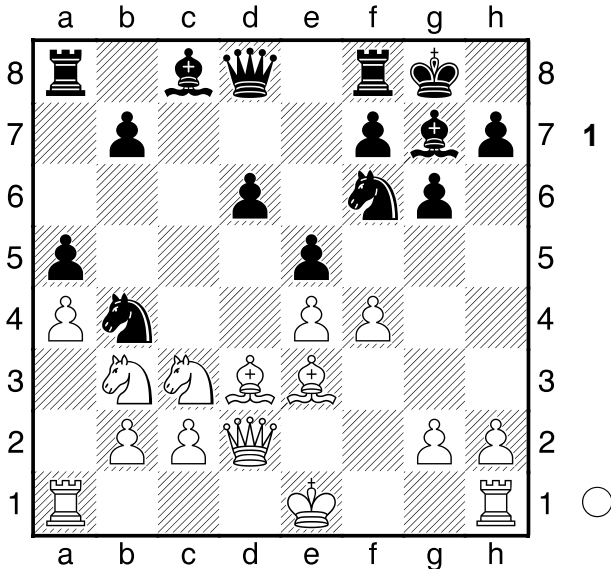


□ Torres Grajales,Ramon **B34**  
 2110  
 ■ Moreno Ruiz,Javier **2503**  
 2503  
 Villalba op (2) 21.08.2005  
 [Moreno Ruiz,Javier]

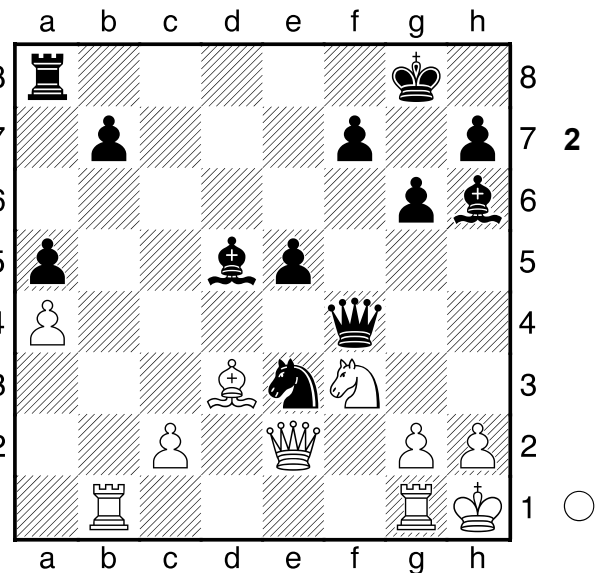
1.e4 c5 2.♘f3 ♘c6 3.d4 cxd4 4.♗xd4 g6 5.♗c3 ♗g7 6.♗e3 ♗f6 7.♞d2 0-0 8.♗b3 d6 9.f4 a5 10.a4 ♗b4 11.♗d3 e5!  
 [ 11...d5 12.e5! ]



12.fxe5  
 [ 12.f5 d5 It would be an ideal release. ]  
 12...dxe5 13.0-0 ♗g4 14.♗c5 ♗e6! A good sacrifice of exchange. 15.♗xf8 ♗xf8 Black has multiple threats, such as Qb6+, Qh4, and above all Nxd3, followed by Bxb3. The position is to Black's advantage, as BLACK'S SQUARE BISHOP IS NOT LOWER THAN A ROOK IN THE MIDDLE GAME. 16.♗d5?!  
 [ 16.♞ad1 ♞b6+ 17.♗h1 ♞d8 18.♗c1 ♗h6 19.♞e2 ♗e3 Recupera la calidad con ventaja. 20.♞xe3 ]  
 16...♗xd5 17.exd5 ♗xd5 18.♞e2 ♞b6+ 19.♗h1 ♗e3 20.♞g1 ♗h6! 21.♗d2 ♞xb2 22.♞ab1 ♞d4 23.♗f3 ♞f4

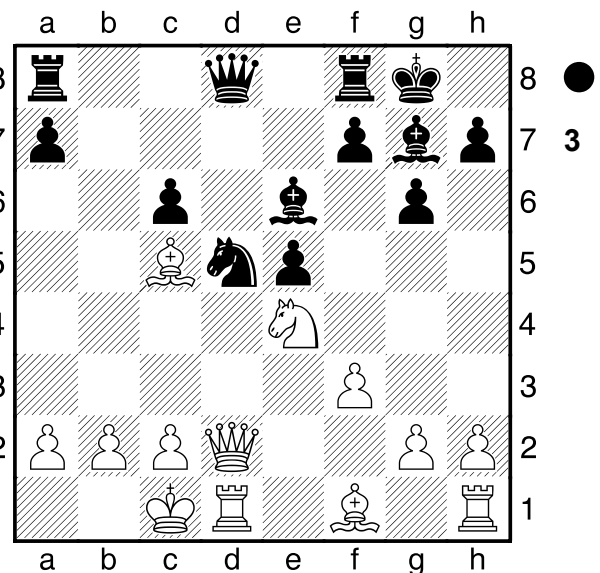
(Diagrama 2)

The strength of the minor black pieces is unstoppable. The e3 is worth as much as a rook. White cracked under pressure now. 24.♞b5? e4! 25.♞xd5 exf3 26.gxf3 ♗xd5+-  
 0-1



□ Perez Gonzalez,Jose Manuel **B76**  
 2303  
 ■ Roa Alonso,Santiago **2344**  
 2344  
 Final absoluta Madrid 2004 (1) 09.03.2004  
 [Moreno Ruiz,Javier]

1.e4 c5 2.♘f3 d6 3.d4 ♗f6 4.♗c3 cxd4 5.♗xd4 g6 6.♗e3 ♗g7 7.f3 ♗c6 8.♞d2 0-0 9.0-0 d5! 10.exd5 ♗xd5 11.♗xc6 bxc6 12.♗d4 e5 13.♗c5 ♗e6!  
 (A positional sacrifice of exchange well studied by theory. White systematically rejects the exchange). 14.♗e4



h6  
 [ 14...♞e8 ]  
 [ 14...♞b8! ]  
**A) 15.♗f8?! Too dangerous. ♞xf8** Black will strive to open the grand diagonal to b2.  
**A1) 16.c4 ♗h6 17.♗g5 ♗f4 18.h4 f6 19.♞d6 fxg5 20.g3 gxh4 21.gxf4 ♗xf4+ 22.♗b1 ♗f5+ 23.♗a1 ♞xd6 24.♞xd6 e4 25.fxe4 ♗xd6 26.exf5 ♗e5 27.♗b1 ♞xb2+ 28.♗c1 ♞xa2 29.fxg6 hxg6 30.c5 ♗g7 31.♗d3 g5 32.♞e1**

♔f6 33.♖f1+ ♕f4+ 34.♗b1 ♖a5 35.♙e2 h3  
0-1 Shutzman,J (2288)-Gershkowich,D (2291)/  
Petah Tiqwa 2007/EXT 2009;

**A2)** 16.g4 f5 17.gxf5 gxf5 18.♖g5 e4 19.c3  
e3 (19...♙xc3!+) 20.♖g2 ♕f7 21.♗xf7 ♖xf7  
22.♙c4 ♗h8 23.♖hg1 ♙h6 24.♖d4 e2+  
25.♗b1 ♙e3 26.♙xd5 cxd5 27.♖xe2 ♙xg1  
28.♖e5+ ♗g8 29.♖xb8+ 1-0 Beqo,N-Wu,H  
(2196)/Victoria 2002/EXT 2009;

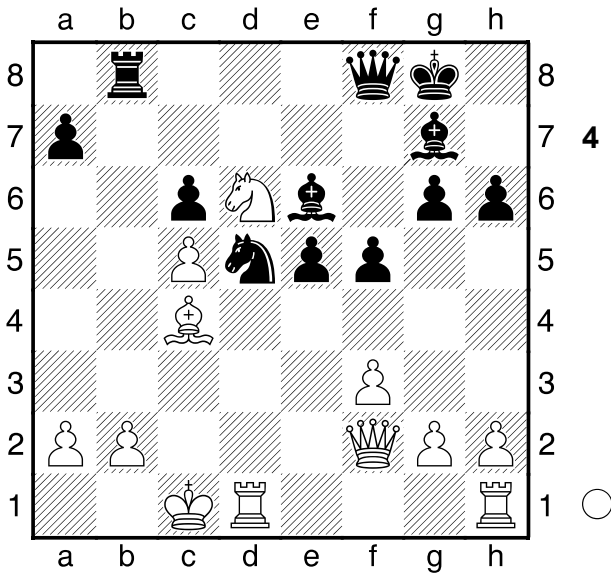
**A3)** 16.♖a5 ♖e7 17.♙a6 (17.g4∞) 17...f5  
18.♖c5 e4 19.♗b3 ♖g5+ 20.♖d2 e3 21.♖e2  
♖f6 22.c3 ♗xc3 23.bxc3 ♖xb3 24.axb3  
♖xc3+ 25.♗b1 ♖a1+ 26.♗c2 ♖b2+ 27.♗d3  
♖c3# 0-1 Martynova,A (1896)-Zyzlova,S/  
Dagomys 2009/CBM 130 Extra;

**B)** ♖15.♙c4 a5∞]

15.c4?! (Debilita un tanto el enroque blanco.)

[ ♖15.♙c4 ]

15...♗b6 16.♖f2 ♖c7 17.♙d6 ♖c8 18.♙xf8 ♖xf8  
19.c5 ♗d5 20.♙c4 f5 21.♗d6 ♖b8±



(A very interesting position. Black has practical compensation for the exchange, because of his attacking chances against the castling. Surely in a close analysis White can secure his advantage, but in a live game it is not so easy, as White has no clear plan).  
22.♖d3? e4!↑ 23.♖b3 ♖xb3 24.♙xb3 e3 25.♖c2 ♗h7!±

(Diagrama 5)

(Ahora la compensación es mas real que nunca, por el fuerte ♙e3 .) 26.♖e1?

[ 26.a3! ♙d4 27.h4 ♗f4 28.♙xe6 ♗xe6 ]

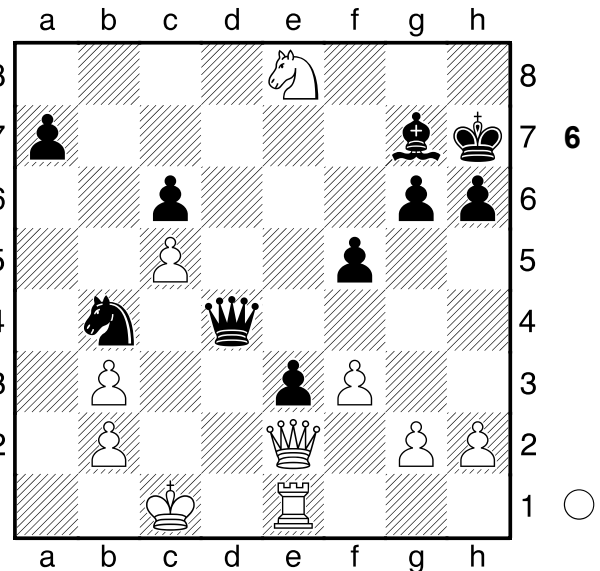
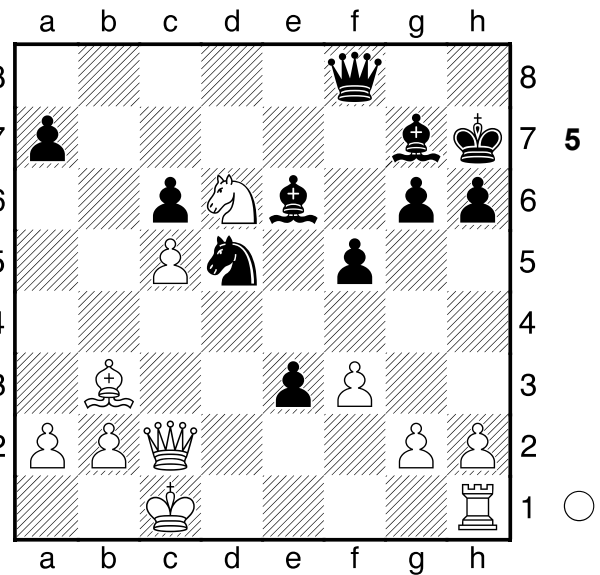
26...♗b4! 27.♖e2 ♙xb3 28.axb3 ♖f6→ (Now white will not be able to stop the attack. Note the useless d6, as it is not part of White's plan. It is merely decorative! This is a modern concept). 29.♗e8?!

[ 29.♖d1♞ ♖e5 30.♗c4 ♖xh2 31.♖xe3 ♖xg2  
32.♖d2 ♖xd2+ 33.♖xd2 ♗a6± ]

29...♖d4!±

(Diagrama 6)

(The black attack is unstoppable.) 30.♖d1



[ 30.♗xg7 ♖xc5+ 31.♗b1 ♖a5 32.♖xe3 ♖a2+  
33.♗c1 ♖a1+ 34.♗d2 ♖xb2+ 35.♗d1 ♖c2# ]

30...♖xc5+ 31.♖c4 ♖a5 32.♗f6+ ♙xf6 33.♖d7+ ♗h8  
34.♗d1 ♖a1+ 35.♗e2 ♖xb2+ 36.♗xe3 ♗d5+  
37.♖xd5 cxd5 (An example of practical compensation for the material, although not very convincing on the theoretical side, the black activity, and the lack of a clear white plan have their weight).  
0-1

□ Kovacevic, Slavko B78 2140  
■ Hansen, Carsten 2270  
Prague op (5) 1988  
[Moreno Ruiz, Javier]

1.e4 c5 2.♗f3 d6 3.d4 cxd4 4.♗xd4 ♗f6 5.♗c3 g6  
6.♙e3 ♙g7 7.f3 ♗c6 8.♖d2 0-0 9.♙c4 ♙d7 10.h4  
h5 !' Andrew Martin. 11.0-0-0 ♗e5

[ 11...♖c8 12.♙b3 ♗e5 ]  
12.♙b3 ♖c8 13.♙h6! IT IS COMPLETELY LOGICAL TO CHANGE THE BISHOP, but it has a flaw.

[13.g4 hxg4 14.h5 ♖xh5 15.♗h6 e6 16.♗dg1 ♜f6 17.♗xg7 (17.fxg4 ♗xh6 18.♜xh6 ♜f4+ 19.♜xf4 ♗xf4) 17...♜xg7 18.fxg4 ♗f6 19.g5 ♗h5 20.♗ce2 ♗c4 21.♜b4 a5 22.♜xb7 ♗e5 23.c3 ♗d3+ 24.♗b1 ♗c5 25.♜b6 ♜e5 26.♗c2 ♜b8 27.♜xa5 ♜xb2+ 28.♗xb2 ♗d3+ 0-1 Ljubojevic,L (2605)-Miles, A (2610)/Brussels 1986/CBM 001]

**13...♗xh6**

[ Intending an exchange sacrifice on c3, although Black can also continue in prescribed fashion with 13...♗c4 . However, I provide some original analysis which demonstrates that this appears to favour White: 14.♗xc4 ♜xc4 15.♗xg7 ♗xg7 16.g4 hxg4 ( after 16...e5 the simple 17.♗db5 assures White of an edge) 17.h5! ♜h8 (or 17...gxf3 18.hxg6 fxg6 19.♜h6+ ♗f7 20.♗xf3 with a strong attack) 18.hxg6 fxg6 19.f4 e5 20.♜xh8! ( improving, I think, over ECO's 20.♗de2) 20...♜xh8 21.♗de2 ♜f8 22.fxg5 dxg5 23.♜g5! and White has a strong attack, pressure against e5, and threats of Ng3 and/or Rh1. ]

**14.♜xh6 ♜xc3** All the positional tricks fall to Black after this thematic sacrifice, but can White break through?

**15.bxc3** Looking at c3 and covering g4, but at the same time not helping f8-rook. One might have thought **15...♜c7** to be more precise, but my analysis suggests that Black is then in trouble. After **16.c4?**

[ 16.♗b1! or 16...♜c8! AN IMPORTANT REINFORCEMENT. The black stats are great. ( 16...♜xc3 )]

**16...♗xc4 17.g4 ♜c5 18.♗xc4 ♜xc4 19.♗f5**

[ 19.gxh5 ♗xh5 20.♜hg1 ♜c3 21.♗f5 ♗xf5 22.exf5 ♜c8 23.♜g2 ♜xf3 (23...♜a3+ 24.♗b1 ♜c5 25.♜xg6+ fxg6 26.♜xg6+ ♗g7 )]

**19...♗xf5**

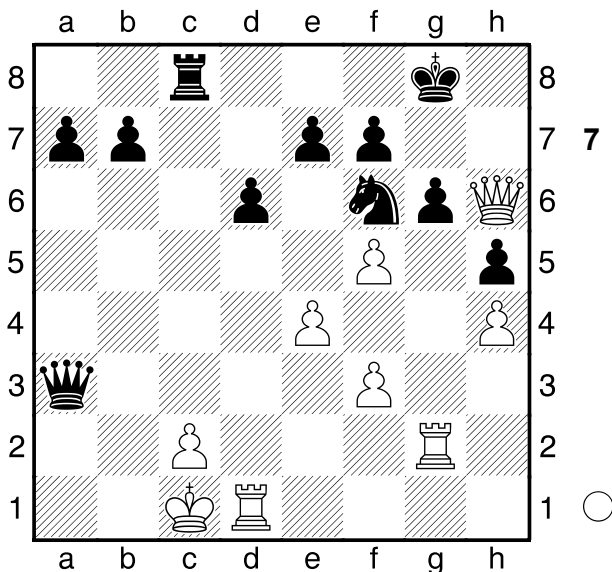
[ 19...gxf5 20.gxf5 ]

**20.gxf5 ♜c8 21.♜h2 ♜xa2 22.♜g2?**

[ 22.fxg6 ♜a1+ 23.♗d2 ♜c3+ 24.♗e2 (24.♗c1 ♜xf3 25.gxf7+ ♗xf7) 24...♜xc2+ 25.♗d2 ♜c4+ 26.♗f2 fxg6 27.♜g2 ♜c5+ 28.♗e1 ♗f7 29.♜xg6 ♜e5# ]

[ 22.♗d3 ♜a1+ 23.♗d2 ♜b1 24.♗e2 ♜xc2+ 25.♗d2 ♜c1+ ]

**22...♜a3+**



**23.♗d2?!**

[ 23.♗b1 Una jugada difícil para los dos. Es muy fea, pero obliga a precisar mucho con blancas. ♜b4+ (23...♜c6 24.♗d3 ♜b6+ 25.♜b3 ♜xb3+ 26.cxb3 ♜xb3+ 27.♗c1 ♜xf3 28.♜c2) 24.♗c1 ♜c5 25.♗dg1 (25.fxg6 ♜a5 26.gxf7+ ♗xf7 27.♜g7+ ♗e6) 25...♜a5 26.♗d1 ♜c3 27.♜g3 ♜a1+ 28.♗e2 ♜c4+ 29.♗e3+ ]

**23...♜xf3-+**

The Queen collaborates in the attack.

**24.♗dg1 ♗xe4+**

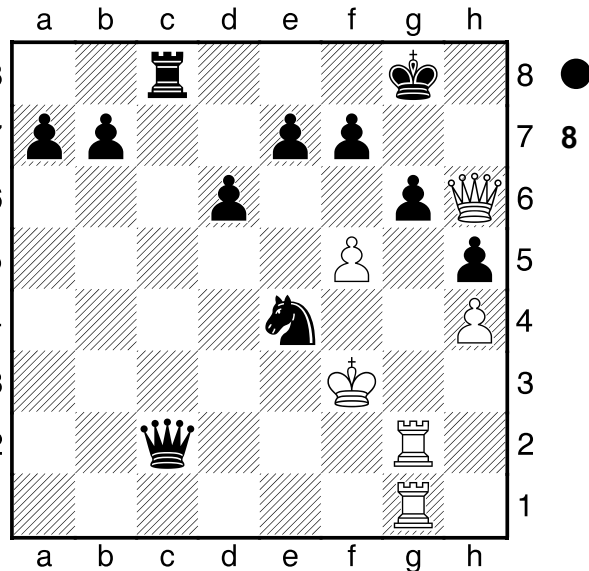
[ 24...♗g4 25.♜g5 ♜xe4 26.c3 ♜c5+ ]

**25.♗e1 ♜c3+ 26.♗e2**

[ 26.♗d1 ♜d4+ 27.♗e1 ♜a1+ 28.♗e2 ♜xc2+ 29.♗f3 ♜a3+ 30.♜e3 ♜c3 31.♜xc3 ♗xc3 32.fxg6 ♗d5+ 33.♗f2 ♜e3+ 34.♗f1 ♜f3+ 35.♗e1 ♗f4 36.gxf7+ ♗xf7 37.♜a2 ]

**26...♜xc2+ 27.♗f3**

[ 27.♗e3 ♜b3+ 28.♗f4 e5+ 29.fxe6 ♗g5 30.♜xg6+ fxg6 31.♗xg5 ♗g7 32.♜g3 ♜c5+ 33.♗f4 ♜c4+ 34.♗g5 ♜b5# ]



**27...♜c3+**

[ 27...♜c3+ 28.♗f4 ♗g5 29.♜xg6+ fxg6 30.♜xc2 ♗h3+ 31.♗e4 ♜xc2+ ]

[ 27...♜b3+ 28.♗f4 e5+ 29.fxe6 ♗g5 30.exf7+ ♜xf7+ 31.♗e3 ♜b3+ 32.♗e2 ♜c2+ 33.♗e1 ♜b1# ]

[ 27...♗g5+ 28.♜xg5 ♜c3+ 29.♜e3 ♜xf5+ 30.♗e2 ♜xe3+ 31.♗xe3 ♜h3+ 32.♗e2 ♜xh4+ ]

**28.♗e2 ♜c2+ 29.♗f3 ♗g5+!**

[ 29...♜b3+ 30.♜e3 ♜c3 31.♜e1 ♜d5 32.fxg6 ♜f5+ 33.♗e2 ♜xe3+ 34.♗xe3 ♜h3+ 35.♗xe4 ♜xg2+ ]

[ 29...♜c3+ 30.♗f4 e5+ 31.fxe6 ]

**30.♜xg5**

[ 30.♗f4 ♜c4+ 31.♗xg5 ♜xf5# ]

**30...♜c3+ 31.♜e3**

[ 31.♗f4 ♜a4# ]

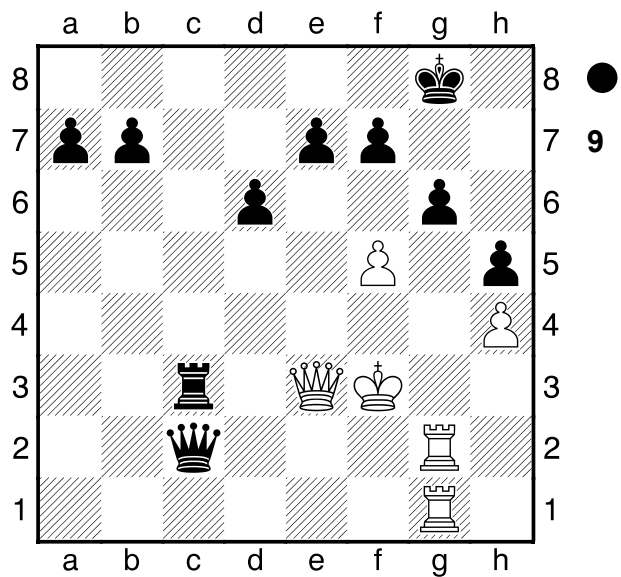
(Diagrama 9)

**31...♜xf5+ 32.♗e2 ♜xe3+ 33.♗xe3 ♜h3+ 34.♗e2 ♜xh4 35.♜f2 a5 36.♜g1 b5 37.♜f4**

[ 37.♜xf7 ]

**37...♜g5 38.♜xf7 ♜e5+ A GREAT GAME OF**

SICILIAN DRAGON WITH BLACK. Exchange sacrifices.



DRAGON!  
0-1