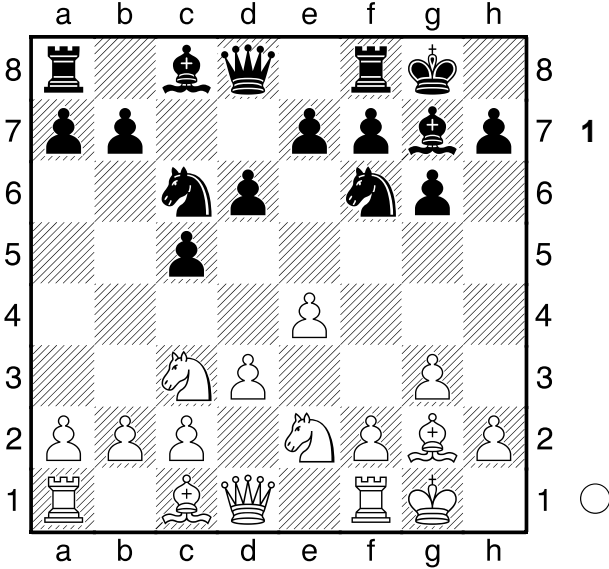


□ Capablanca, Jose Raul
 ■ Ilyin Zhenevsky, Alexander
 Moscow 1925
 [Moreno Ruiz, Javier]

1.e4 c5 2.♟c3 ♟c6 3.g3 g6 4.♙g2 ♙g7 5.♟ge2 d6
 6.d3 ♟f6 7.0-0 0-0



ATTENTION TO THE BLACK STRUCTURE. It characterises the Dragon variation of the Sicilian. A system full of logic, where black has a clear plan of attack on the queenside, and in the centre he is always on the lookout for the reaction Pd5! A DRAGON SYSTEM WHICH IS GOOD AGAINST ANY WHITE DEVICE, and gives a game full of chances. 8.h3 a6?!

[8...♟b8 Starting counterplay on the queenside directly.]

9.♙e3 ♙d7 10.♟d2 ♟e8?! 11.♟d1?! (A bit strange to make this move without being forced into it).

[11.♙h6 ♙h8 12.f4]

[11.f4 b5 12.♟f2!]

11...♟c8 12.c3 ♟a5 13.g4 ♟e8 14.f4 ♙e8 15.g5 ♟d7 16.f5 b5 (Both sides proceed with their respective plans for pawn avalanches on the flank they have the advantage.) 17.♟f4 b4 18.f6 (Not bad, but it can be delayed a bit longer).

[18.♟d5!]

18...♙f8

[18...exf6?! 19.♟d5 fxg5 20.♙xg5 f6 21.♟xf6+→]

19.♟f2? (A very slow move. White has moved forward in the attack, but now rests on his laurels).

[19.fxe7 ♟xe7 20.♟f2 (20.h4!? (Con buenas chances en ambos casos.))]

19...bxc3 20.bxc3 e6! (Now it is not easy to break through the black kingside. Capablanca tries the only plan: Open up the h-file.) 21.h4 ♟b8 22.h5 ♟b6 23.hxg6 hxg6 24.♟d1!? (Acknowledging the error of 19.Nf2).

[24.♟ab1 ♟db8 25.♟xb6 ♟xb6 26.♟d1 (The exchange of a rook would prevent black from attacking on the queenside).]

24...♟de5! 25.♟f2?!

[25.♙h3!]

[25.c4 ♟xd2 26.♙xd2± Capablanca ♟d4∞ Panov]

B24

25...♟g4 26.♟h4 ♟ce5 27.d4!?

[27.♙d2 ♟db8 28.♙h3 ♟b2! (The classic target of a queenside attack: the seventh rank). 29.♟xb2 ♟xb2 30.♙c1 ♟h2!! (This is what happens when you invade in seventh: You move to attack the king through the horizontals). 31.♙g2 ♟xg2+ 32.♟xg2 ♟xf1 33.♟xf1 ♟xc3∞ Panov]

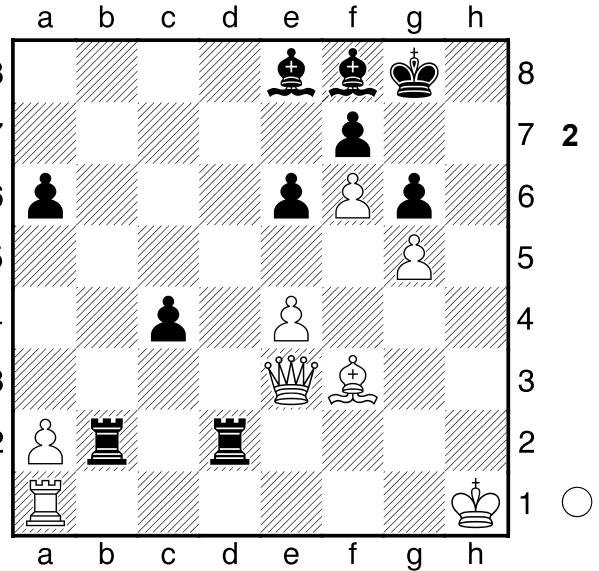
27...♟xe3 28.♟xe3 ♟xc3 (White's pawns start to fall, and from there the whole position, as black reaches the centre, and the kingside. End result of a successful attack on the queenside). 29.dxe5 ♟xe3+ 30.♟h1? (After this move, white is lost).

[30.♟h2! (And they can be draw.) ♟b2! 31.♟ae1 ♟c3 32.♟d1 c4 33.♟d3!? cxd3 34.♟f3 ♟xg2+ 35.♟xg2 dxe5 36.♟h3 ♟d2+ 37.♟h1 ♟c1+ 38.♟g2= Panov]

30...dxe5! 31.♟f3 exf4 32.♟xe3 fxe3∞ (And the white attack has disappeared, and black has a powerful passed pawn and active rooks). 33.♟e1?

[33.♟e1 ♟d3 34.♟f4 ♟b2 35.♟xe3 ♟d1+ 36.♟h2 ♟dd2 37.♟g3 ♙c6∞ (Una vez mas la septima fila.)]

33...♟b2 34.♟xe3 ♟dd2 35.♙f3 c4!-+



(The rooks doubled in seventh and the passed pawn decide). 36.a3 ♙d6 37.♟a7 c3 (A game full of excitement and colour right up to the last moment. One gets the impression that Capablanca's calm game was not very well suited to these positions of mutual attacks).

[37...c3 38.♟a8 c2! 39.♟xe8+ ♙f8 40.♟g1 (40.♟f1 ♟f2+) 40...♟h2+-+]

0-1

B76

□ Reissner, H

■ Najdorf, Miguel

Warsaw-ch

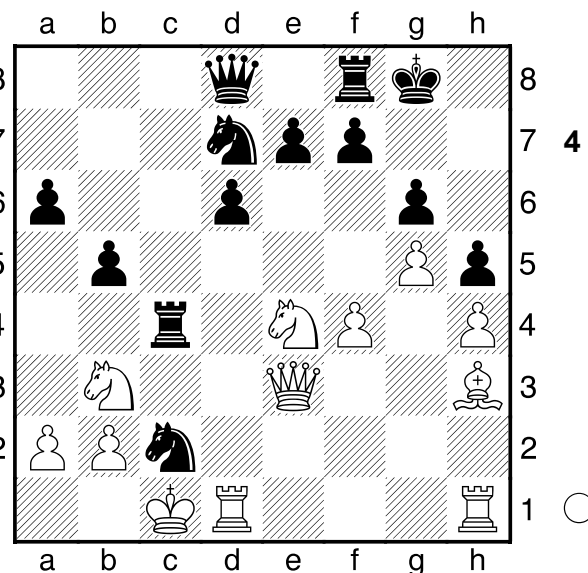
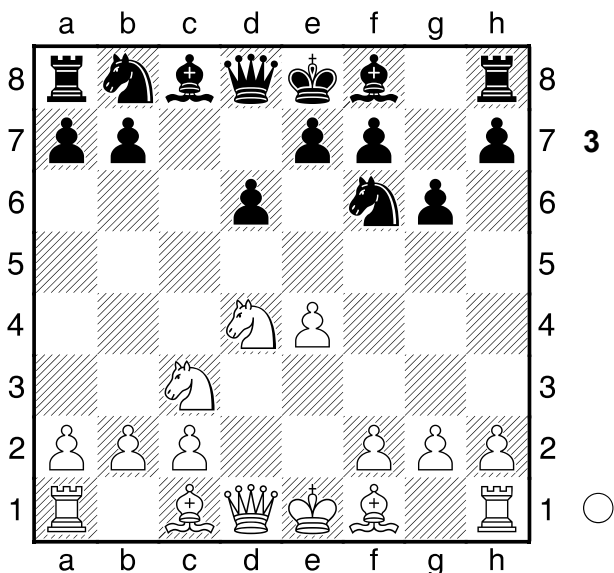
1934

[Moreno Ruiz, Javier]

1.e4 c5 2.♟f3 d6 3.d4 cxd4 4.♟xd4 ♟f6 5.♟c3 g6

(Diagrama 3)

One of the first examples of the Dragon Sicilian. Black tries to develop his pieces in a very natural way, and to



aggressive places: Bg7,0-0,Nc6,Bd7 and Rc8 are in his script, and then exert serious pressure on the queenside, for example with Na5-Nc4,b5,a5, etc. **6.♗e3 ♘g7 7.f3 0-0 8.♞d2 a6**

[More played and better is 8...♗c6]

9.0-0-0 b5?!

[Better is 9...♗c6±]

10.g4

[También es muy fuerte 10.h4 h5 11.g4!±]

10...♗b7

[On 10...b4 White plays 11.♗ce2±]

11.h4 h5 12.g5?

[Con esta jugada, las blancas cierran la posición en el flanco de rey, lo que conviene a las negras. Mejor era 12.gxh5 opening up play is a correct idea! ♗xh5 13.♗h6± White has a clear advantage.]

[12.♗h6± was also very strong]

12...♗fd7 The position is roughly the same, although Black has more practical possibilities on the queenside.

13.♗b3

[13.♞g1= was an interesting possibility.]

13...♗c6 14.f4?!

[Con esta jugada, las blancas sólo debilitan su centro, no tienen posibilidades de lanzar el ataque. Mejor era 14.♗b1!?=]

14...♞c8♞ Black starts attacking on the c-file, which is often seen in the Sicilian. **15.♗h3?!**

[Better was 15.♗b1!?]]

15...♗b4?

[Black missed a very strong tactical attack 15...♗xc3! From a psychological point of view, it is not easy to find this move because it gives up the strong bishop. However, in this case, it is good because it weakens the position of the white king. 16.bxc3 ♗a5 17.♞d3 ♗c4♞]

16.♗d4 ♗xd4 17.♞xd4?!

[More precise was 17.♗xd4!?= ♞xc3! This sacrifice will be discussed later. 18.bxc3 ♗xa2+ 19.♗b2 ♗b6 20.♗xa2 ♗c4 21.♞c1 ♞a5+ 22.♗b1 ♗a3+ 23.♗b2 ♗c4+ 24.♗b1 ♗a3+=]

17...♞c4! Najdorf seizes his opportunity to launch the attack. **18.♞e3** Now black has a magnificent opportunity which he will take advantage of to perfection.

18...♗xe4!♞ 19.♗xe4 ♗xc2

20.♞a7?

[Better was 20.♞e2!? ♗d4+ (20...♗e3+ 21.♗b1 ♗xd1 22.♞xd1♞) 21.♞xc4 bxc4 22.♗xd4 ♞c7♞

It is difficult to estimate this complicated position. However, in due course, Black has a little more chance.]

20...♗e3+ 21.♗b1?

[This movement loses. Better was 21.♗c3!? ♗xd1 22.♞xd1 b4♞]

21...♗xd1-+ 22.♞xd1 ♞xe4 23.♗xd7 ♞xf4 24.♗c6

♞c8 25.♞e3?! ♞xh4 26.♗d5 ♞f5+ 27.♗a1 ♞h2

28.a3 e6 29.♗b7 ♞h3

0-1