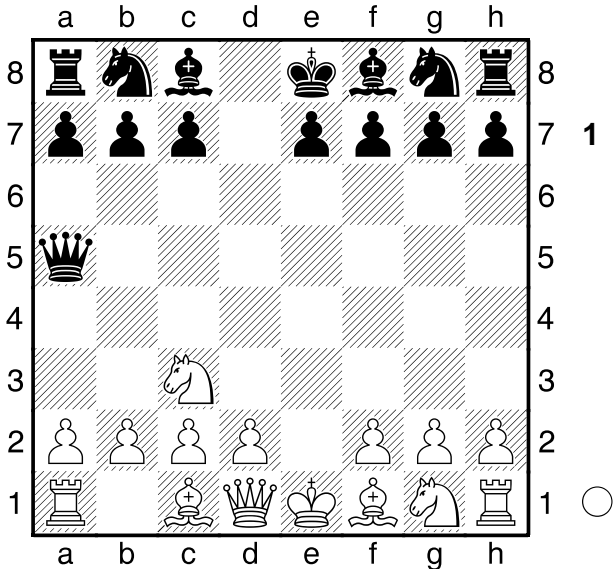
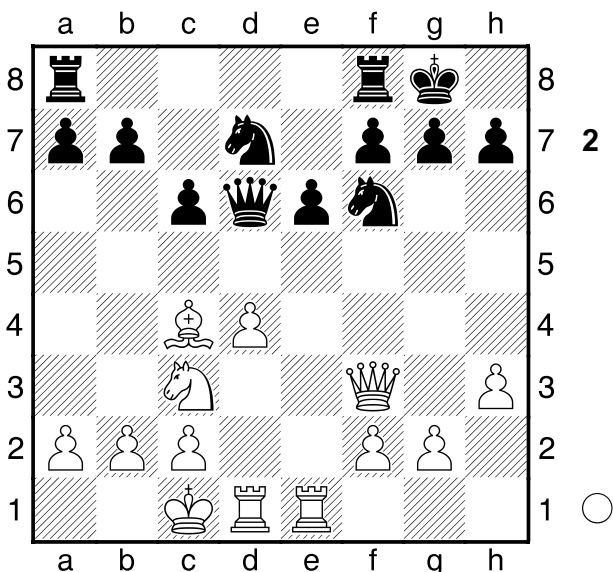


□ Rivera Kuzawka, Daniel
 ■ Campora, Daniel
 Santiago, España
 [Van der Brule, A]

1.e4 d5 Scandinavian Defence. Black looks for a quick central attack. 2.exd5 ♖xd5 3.♗c3 ♚a5



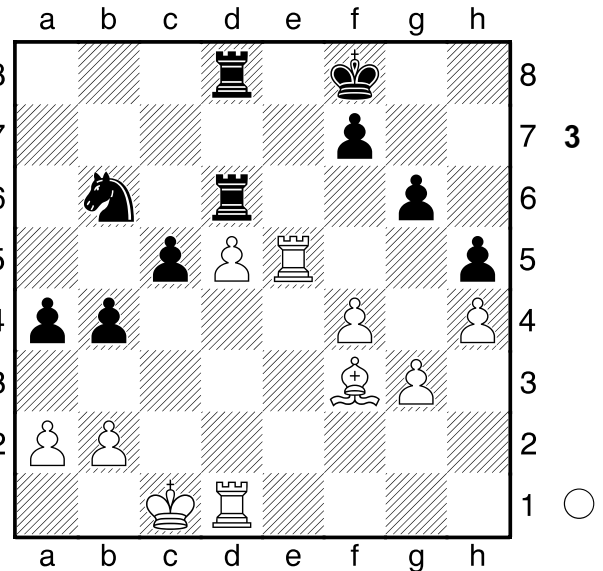
The oldest and most reliable form of the Scandinavian Defence. The queen is placed in a safe place, and a reliable development scheme is sought. 4.d4 ♘f6 5.♘f3 c6 6.♙c4 ♙g4 In the Scandinavian it is important to develop the queen's bishop outside the pawn chain. 7.h3 ♙xf3 8.♗xf3 ♘bd7 9.♙d2 e6 10.0-0-0 ♚c7 A common move in the Scandinavian. The queen seeks a safe square, where it is out of the threat Nd5. 11.♙f4?! ♙d6 12.♙xd6 ♗xd6 13.♗he1 0-0



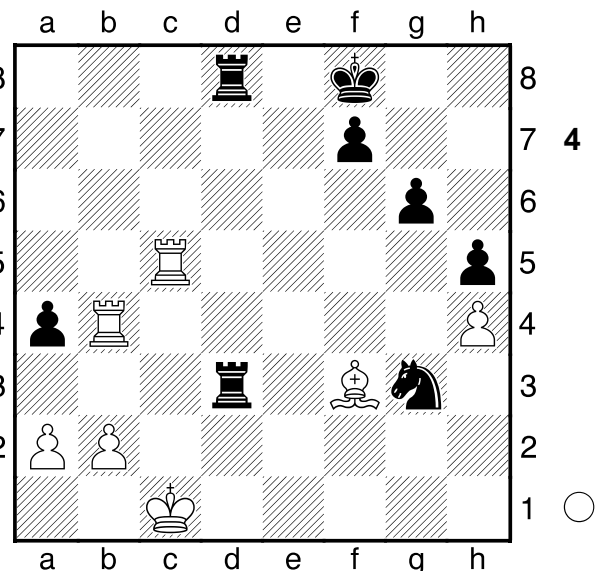
BLACK'S IDEAL DEVELOPMENT SCHEME IN THE SCANDINAVIAN. He has a solid and well-developed position, and can now attack on the queenside with confidence. 14.♘e4 ♘xe4 15.♗xe4 ♖ad8 16.f4 b5!

B01
 2385
 2525
 1995

17.♙b3 g6 18.c3 a5 19.♙c2 b4↑ The attack is swift. 20.c4 c5! Securing the c5 square for the knight and also puts pressure on the column. 21.♗e3 ♗c7 22.d5 exd5 23.cxd5 ♘b6 The passed queenside pawn is sufficiently blocked, so it becomes a target for attack. 24.♗e5 [24.♗f3 c4 25.f5 ♗d6 26.♗e3 a4→] 24...♗xe5 25.♗xe5 ♙d6! 26.♙e4 ♗fd8 27.♙f3 ♘f8 28.g3 a4 29.h4 h5



30.f5!? [30.♙c2 c4 31.♖d4 b3+ 32.axb3 cxb3+ 33.♙b1 ♗c8 with slight black advantage.] 30...♗f6! 31.d6 ♘c4! 32.♗xc5 ♘e3 33.♖d4 ♘xf5 34.♗xb4 ♘xg3 35.♙g2 ♗fxd6 36.♙f3 ♖d3!-+



Black continues with his central attack. Material losses are inevitable for White. 37.♗f4 ♗xf3 38.♗xf3 ♘e2+ 39.♙b1 ♖d1+ 40.♙c2 ♗c1+ 41.♙d2 ♗xc5 42.♙xe2 ♗c2+ 43.♙d1 ♗xb2 44.♗a3 ♗b4-+ The rook endgame is totally lost for black, with two pawns down, and no counterplay. An exemplary game! 0-1