

C17

□ Alekhine, Alexander  
 ■ Nimzowitsch, Aron  
 San Remo 1930  
 [Moreno Ruiz, J]

1.e4 e6 The solid French defence, very pleasing to the strategic Aaron Nimzowitsch. On the negative side, it's slightly passive. 2.d4 d5 3.♘c3 ♙b4 4.e5 c5 5.♙d2 ♚e7 6.♗b5 ♙xd2+ 7.♗xd2 0-0 8.c3 b6? A few years later Nimzowitsch improved his play, and got a better position.

[ 8...♗f5 9.♙d3 ( 9.g4!? ♗h4!) 9...♙d7 10.♗f3 ♙xb5 11.♙xb5 ♗b6 12.♙d3 ♗c6= Stolz-Nimzovich 1934 ]

9.f4 ♙a6 10.♗f3 ♗d7 11.a4! ♗bc6

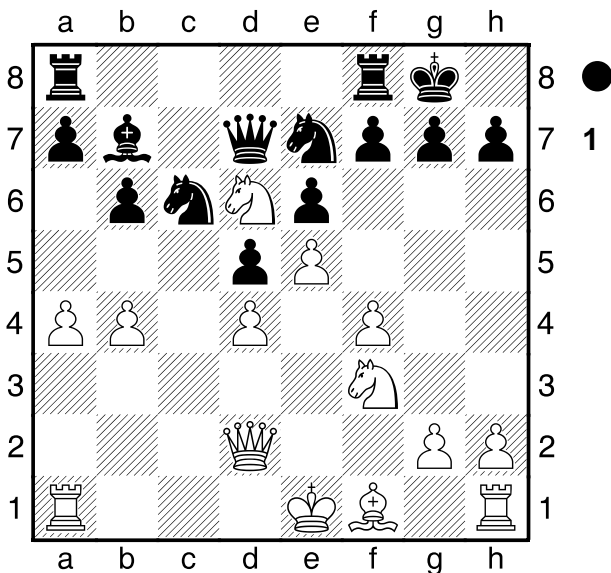
[ 11...c4 12.♗d6 ( 12.♗a3 ♗xa4 ) 12...♗c8 ]

12.b4!± The black side remains very cramped, spaceless, and passive. This is a problem for the French Defence when the opening goes wrong.

12...cxb4

[ 12...c4 13.♗a3 ( 13.♗d6± (Euwe) ) 13...♗d8 14.♗c2 ]

13.cxb4 ♙b7 14.♗d6±



This strong knight stops the black game. A knight in the sixth row can be worth as much as a rook! 14...f5?! This move is designed to defend the King's side, but abandons any further counterplay by the black player.

[ 14...a5 It was a little more active. 15.b5 ( 15.♙b5 axb4 16.0-0±; 15.bxa5 ♗xa5 16.♗b4 ♙a6! = ) 15...♗b4 16.♙d3 f5± ]

15.a5! ♗c8

[ 15...bxa5 16.b5 ♗d8 17.♙xa5± ]

16.♗xb7 ♗xb7 17.a6! A very important move! The White player gains a lot of space on the Queens' side, which favours this player for the subsequent attack.

17...♗f7

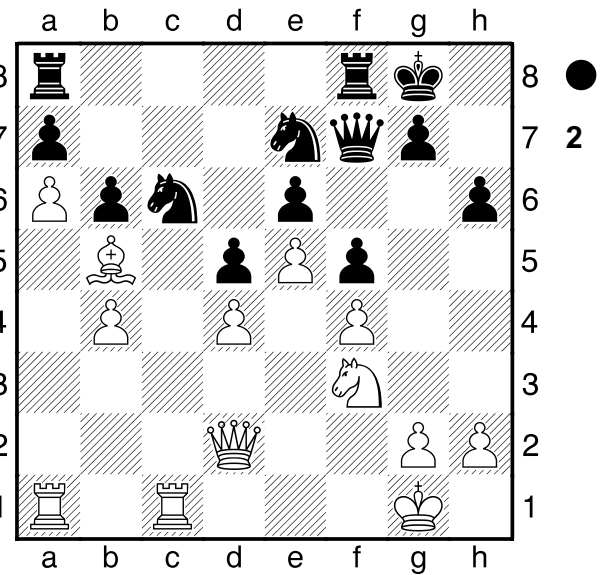
[ 17...♗e7 18.♙b5 ♗xb4 19.♙b1+- ]

18.♙b5! ♗8e7 19.0-0 h6

[ 19...♙fc8?! ]

20.♙fc1!

(Diagrama 2)

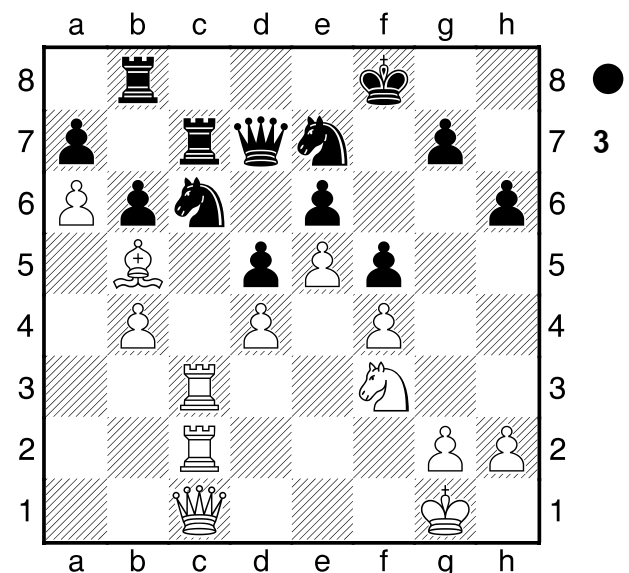


The White player, based on his huge space advantage, begins to push on the Queens' side through C column . Black player can't display anything other than a passive defense. His only active plan, which would be ...Pg5 is very well controlled by white. 20...♙fc8 21.♙c2 ♗e8 [ 21...♗d8 22.♙ac1 ♙xc2 23.♙xc2 ♙c8 24.♙d7 ( 24.♙xc8 ♗xc8 25.♗c3+- (Alekhine) ♗e7 26.♗c7+- ) 24...♙xc2 25.♗xc2± And the invasion of the Queen by c7 is decisive. ]

22.♙ac1! The white increases the pressure on the queen's side, but it could even have saved a movement with respect to the game.

[ 22.♙a3! ♙c7 23.♙ac3 ♙ac8 24.♗c1 (Alekhine) ]

22...♙ab8 23.♗e3 ♙c7 24.♙c3! ♗d7 25.♙1c2 ♗f8 26.♗c1!



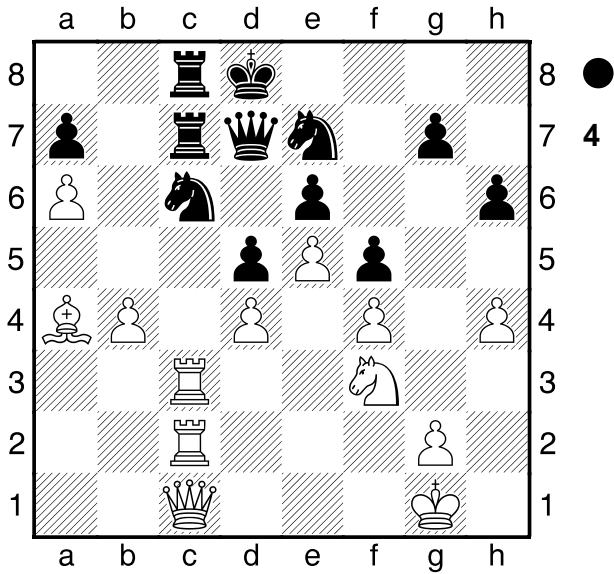
Tripling Rooks!! The pressure from the column is overwhelming. Black tries a very passive plan to resist.

26...♙bc8 27.♙a4! The target is Pb5, winning a piece. Black gives up a pawn to drive the king to defense.

27...b5 28.♙xb5 ♗e8 29.♙a4 ♗d8 Black has reached such an absolutely passive defensive position that there is no mobility at all. 30.h4!+-

# INMORTAL OF ZUGZWANG IN ENGLISH

[ 30.b5? ♘b8 31.♖xc7 ♗xc7 32.♗xc7 ♕xc7  
33.♗xc7+ ♘xc7 And black player can resist. ]



(An immortal example of a crippling pin, and a punishment for the passive defence of the black.)

**30...h5 31.♕h2 g6 32.g3+-** Black has to move a piece, and material loss is inevitable, as you can see with a small analysis. A remarkable position, and a rarity in the history of chess, black is left in zugzwang with the board full of pieces! THE IMMORTAL GAME OF ZUGZWANG

[ 32.g3 ♖b8 33.♗xc6 ♘xc6 34.♖xc6 ♗xc6  
35.♗xc6+- ]

[ 32.g3 ♕e8 33.b5 ♘b8 34.♖xc7 ♗xc7 35.♖xc7+- ]

[ 32.g3 ♖b8 33.♗xc6 ♘xc6 34.♖xc6 ♗xc6  
35.♗xc6+- ]

1-0