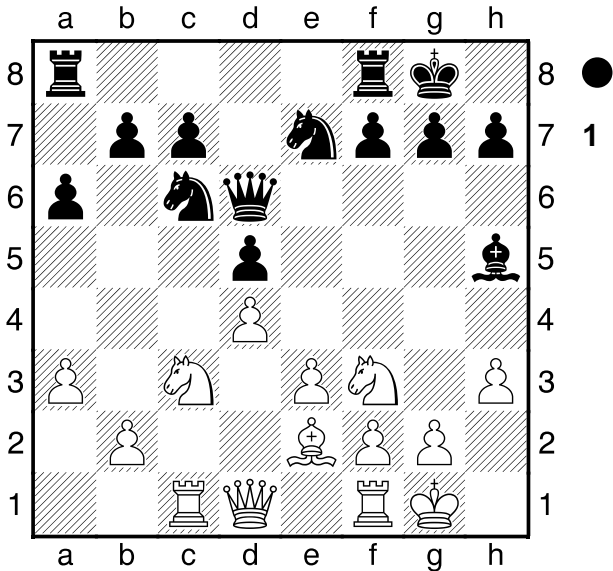


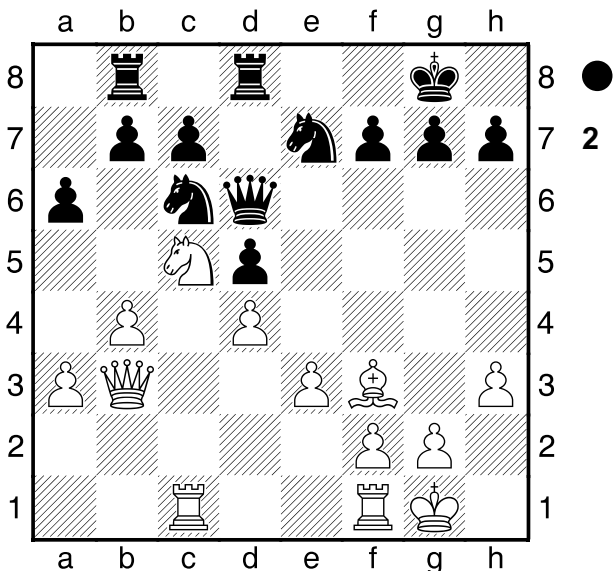
□ **Moreno Ruiz, Javier**
 ■ **Martinez Reyes, Pedro Ramon**
 Mostoles op 15'+5"
 [Moreno Ruiz, J]

D02
2447
2415
 01.05.2021

1.d4 d5 2.♙f4 ♘c6 This move is dubious, as it prevents the thematic advance of the c-pawn against the white centre. 3.♘f3 ♙g4 4.e3 e6 5.c4 ♙b4+ 6.♘c3 ♘ge7 7.♞c1 0-0 8.h3 ♙h5 9.cxd5 exd5 10.♙e2 ♙d6 11.♙xd6 ♞xd6 12.0-0 a6 13.a3±

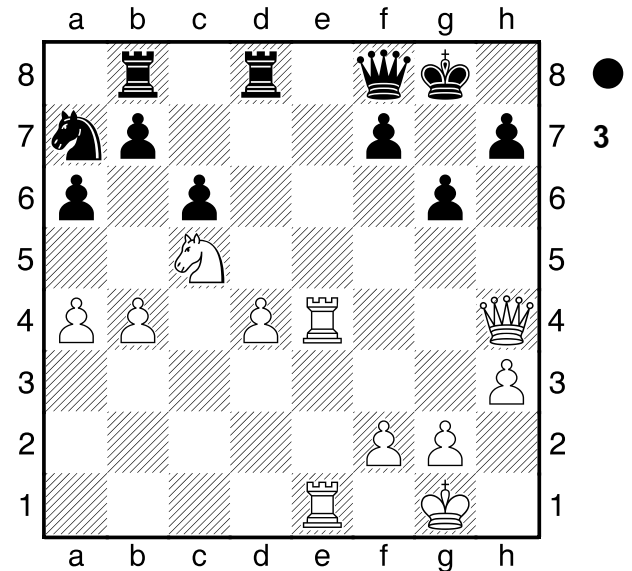


And white has a comfortable minority position, with black's Nc6 very badly placed. 13...♘a5? Loses time. 14.b4 ♙xf3 [14...♘c4 15.♘xd5 ♘xd5 16.♙xc4±] 15.♙xf3 ♘ac6 16.♞b3 ♞fd8 17.♘a4 ♞ab8 18.♘c5

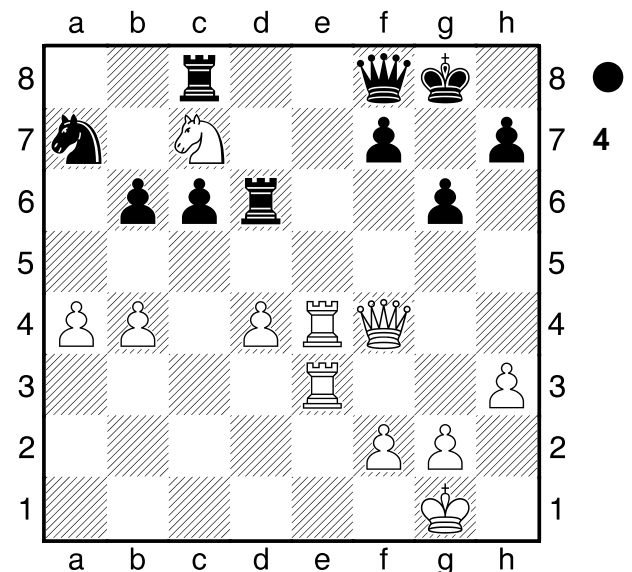


An ideal minority position with White. Note the bad position of Black's Nc6. 18...♘a7 19.a4 c6 Black manages to avoid the break, but at the cost of being left with an extremely passive Ca7. 20.♙e2 ♘f5 With the idea of setting up counterplay on the kingside with Ch4, but White changes his plan. 21.♙d3 ♞f6

22.♞d1 ♘d6 23.♞g4 ♞e7 24.♞fe1 g6 25.e4!± An important plan B in the minor. White moves to an isolani in ideal conditions, because of the poorly placed Ca7, which when the game opens up is a minus piece. 25...dxe4 26.♙xe4 ♘xe4 [26...f5? 27.♙xf5±] 27.♙xe4 ♞d6 28.♞h4 ♞f8 29.♞ce1 [29.♞e7 ♞xd4 30.♞xd4 ♞xe7 31.♘d7!]]



Black can hardly move in the face of the pressure from the white pieces. Ca7 is a minus piece, while Nc5 is very strong. 29...b6 [29...♘c8 30.♘d7! ♞xd7 31.♞e8+-] 30.♘xa6 ♞a8 [30...♞b7 31.♞f4 ♞d6 32.♞xd6 ♞xd6 33.♞e7+-] 31.♞f4 ♞ac8 32.♙1e3!± I thought it was a very useful move, threatening Te7 now. 32...♞d6? Error en muy mala posicion. [32...♞d6 33.♞e8+ ♔g7 34.♞xd6 ♞xd6 35.♞e7 ♞a8 36.♘c7 ♞c8 37.♘e8+-] 33.♘c7!+-



And the threat Te8 or Be8 is decisive. 33...g5

After a few minutes of reflection, a desperate counterplay.

[33...♖xc7 34.♖e8]

34.♖xg5+ ♖g6 35.♖f4 ♖xb4 36.♖e8+ ♖xe8

37.♖xe8+ ♖g7 38.♖a8!+- The precise one, which ends the game at the threat Ce8+ or Txa7 38...♖xa4

[38...♖e1+ 39.♖h2+-]

39.♖e8+ ♖f8 40.♖f6+ and mate to the next.

jmorenoruiz70@gmail.com

1-0