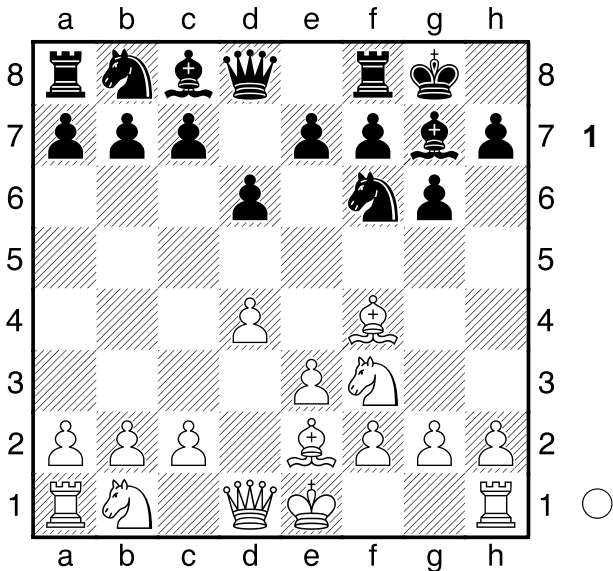


□ Kasparov, Garry
 ■ Horiguti, Augusto
 Sao Paulo 450 anniv sim
 [Moreno Ruiz, J]

A48
 2817
 0
 21.08.2004

1.d4 ♘f6 2.♗f3 g6 3.♙f4 ♙g7 4.e3 0-0 5.♙e2 d6



Black's king's Indian disposition. White must look for an attack on the queenside, as the kingside is very well defended. 6.0-0 ♗bd7

[6...♗h5 '?' 7.♙g5 h6 8.♙h4 g5 '?' 9.♗fd2! (9.♙g3 ♗xg3 10.hxg3=) 9...gxh4 10.♙xh5±]

7.h3 ♗e8

[7...♗e8 8.♙h2 e5 9.dxe5 dxe5 10.♗xe5 ♗xe5 11.♗xd8 ♗xd8 12.♙xe5±]

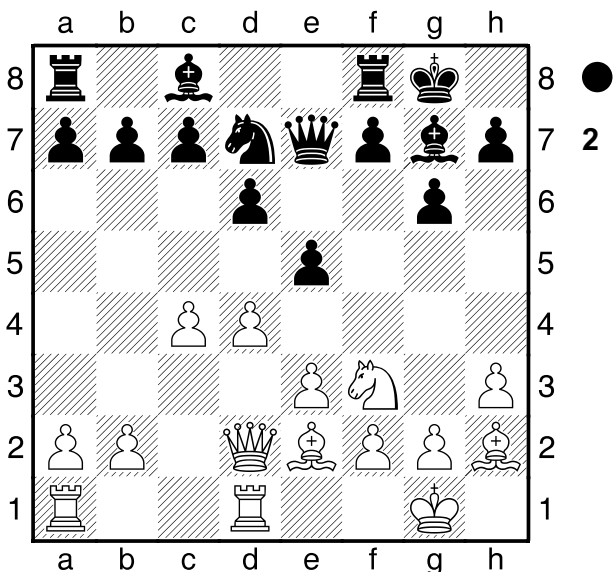
8.c4 e5

[8...c5 9.♗c3 cxd4 10.exd4 e5 11.♙h2±]

9.♙h2 ♗e4

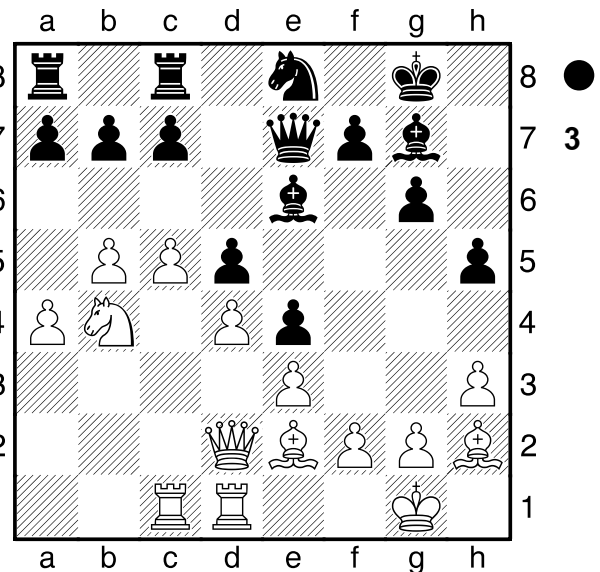
[9...exd4 10.exd4±]

10.♗bd2 ♗xd2 11.♗xd2 ♗e7 12.♗fd1

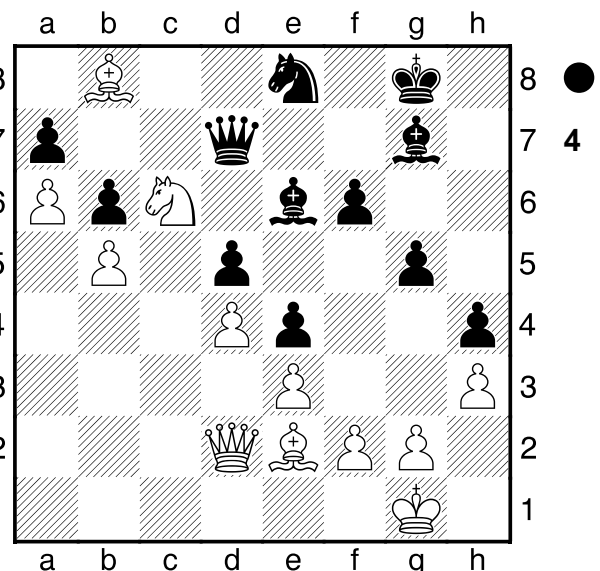


e4?! A TYPICAL MISTAKE. Black frees white Ah2, which will do a magnificent job of defending and

attacking on the queenside. 13.♗e1 ♗f6 14.♗ac1 ♗d8
 15.b4! d5 16.b5 ♗e8
 [16...dxc4 17.♙xc4]
 17.a4 ♙e6 18.c5
 [18.cxd5 ♙xd5]
 18...♗dc8 19.♗c2 h5 20.♗b4



TAKE NOTE OF THE WHITE DISPOSITION. Avalanche on the queenside, and the Bh2 playing a very important role in the attack. Attention also to the recycling of Cf3. 20...♗g5 21.♙f4 ♗d8 22.a5 g5 23.♙h2 h4 24.a6 b6 25.cxb6 cxb6 26.♗xc8 ♗xc8 27.♗c6 ♗d7 28.♗c1 f6 29.♗b8 ♗d8 30.♗xc8 ♗xc8 31.♗c6 ♗d7 32.♙b8!±



A beautiful and original manoeuvre. The black queenside collapses, and black tries something desperate. 32...♙xh3?

[32...♗c8 33.♙xa7 ♙d7 34.♙xb6 ♙xc6 35.bxc6 ♗xc6 36.♗a5 ♗c1+ 37.♙f1+-]

33.gxh3 ♗xh3 34.♗d1 ♗d7 35.♙g4 f5 36.♙xf5 ♗f7 37.♗g4 jmorenoruiz70@gmail.com 1-0

LONDON SYSTEM AGAINST KINGS INDIAN STRUCTURE

□ Mirzoev,Azer

■ Cabrera Trujillo,Jorge Juan

Sauzal op (4)

[Moreno Ruiz,J]

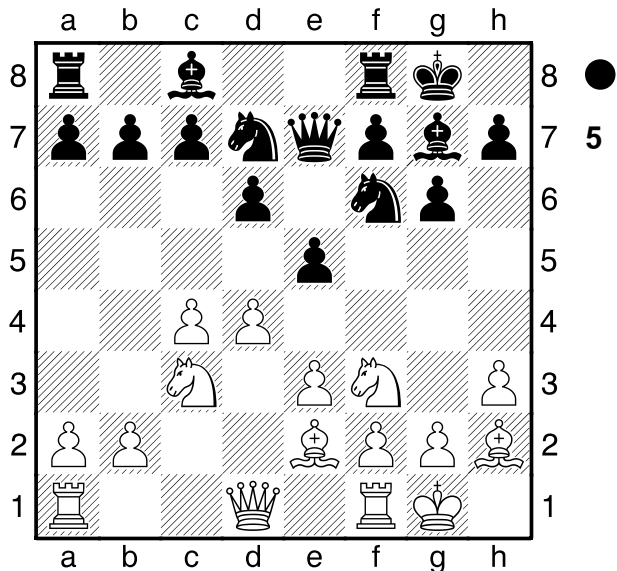
A48

2512

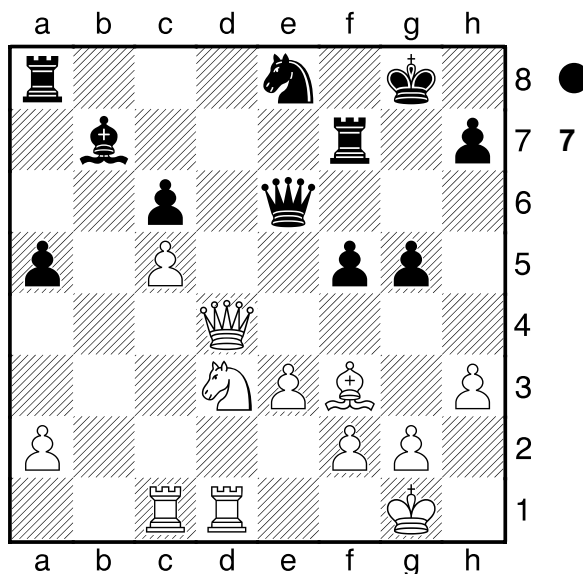
2350

13.11.2006

1.d4 ♘f6 2.♘f3 g6 3.♙f4 ♙g7 4.e3 0-0 5.♙e2 d6
6.0-0 ♘bd7 7.h3 ♜e8 8.c4 e5
[8...c5 9.♘c3 cxd4 10.exd4 e5 11.♙h2±]
9.♙h2 ♜e7 10.♘c3!

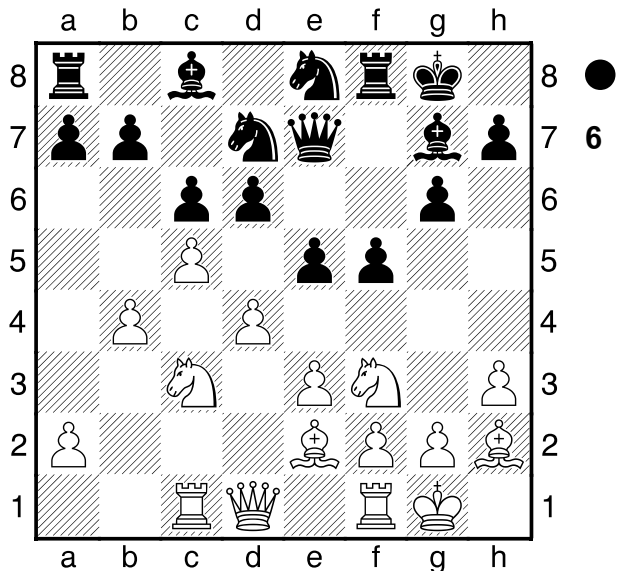


19.♘xe5 ♜xe5 20.♘b4 ♜f6 21.♙f3 ♙b7 22.♜d7 ♜f7
23.♜d4 ♜e6 24.♜fd1 a5 25.♘d3±



White has an extra pawn, and a better position. 25...♘f6
26.♜e5 ♜e7 27.♜xe6+ ♜xe6 28.g3 ♙a6 29.♘b2 ♜b8
30.♘c4 ♙xc4 31.♜xc4 ♜b2 32.♜a4 ♜b5 33.♜c4 ♘e4
34.♜d8+ ♘f7 35.♜d7+ ♘g6 36.g4 ♘f6 37.♜d6 ♜xc5
38.gxf5+ ♘xf5 39.♜xc5+- jmorenoruiz70@gmail.com
1-0

THESE TWO MOVES IN THE LONDON, c4 and Cc3
ARE ALWAYS ASSOCIATED. Now the white attack
on the queenside is very strong, based on quickly
organising c5. 10...c6 11.♜c1 ♘e8 12.b4 f5 13.c5



The attack on the queenside has been successful.
13...d5 14.b5 g5 15.bxc6 bxc6 16.dxe5
[16.♘d5 cxd5 17.c6 ♘b6 18.♘xe5]
16...♘xe5 17.♙xe5 ♙xe5 18.♘xd5! And White is left
with an extra pawn and better play for the unprotected
black king. 18...♜g7
[18...cxd5 19.♜xd5+ ♘g7 20.♜xe5+ ♜xe5
21.♘xe5+-]