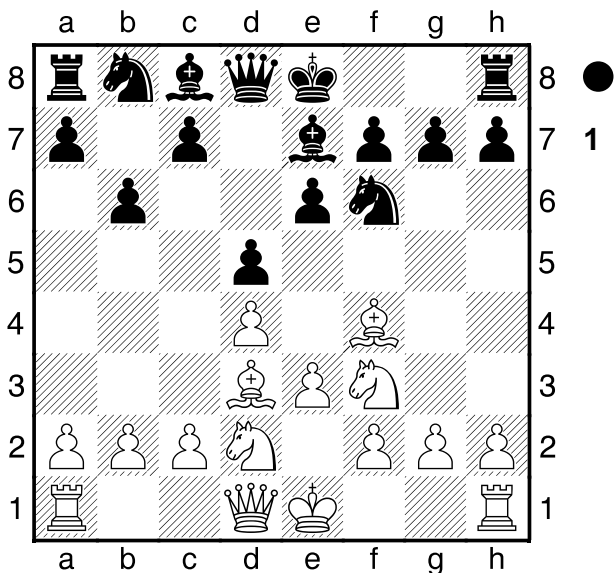


□ Mason, James
 ■ Wittek, Alexander
 Vienna 1st (18)
 [Moreno Ruiz, J]

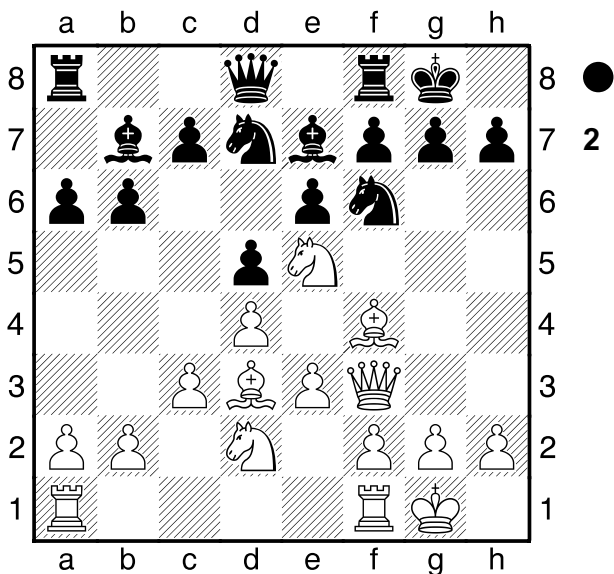
D02

01.06.1882

I think that whenever one is going to study an opening, one should first examine the most classical examples, in order to get a clear idea of the original intentions of the opening. 1.d4 d5 2.♟f4 e6 3.e3 ♘f6 4.♞f3 ♙e7 5.♙d3 b6 6.♞bd2

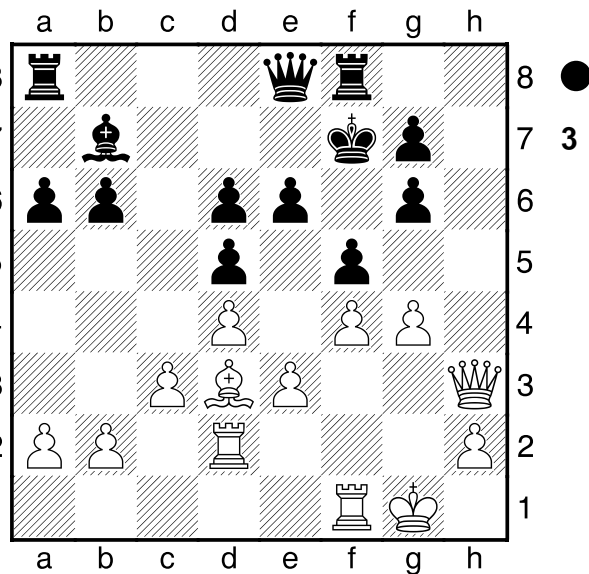


White development characterises the London system. A system where White develops in a logical and natural way, with no pretensions of direct attack, but with the idea of reaching a solid and well-developed position, where he can take action on either flank, depending on Black's disposition of his pieces. The exploitation of the e5-square by the white pieces is thematic. THIS IS WHAT IS CALLED AN OPENING SCHEME. 6...♟b7 7.♞e5 a6 8.c3 ♘bd7 9.0-0 0-0 10.♟f3!



The former player Mason, J was an inveterate practitioner of the London system, and played it

successfully against the best players of the late 19th century. Here he shows an excellent understanding of the system, for as the black queenside is very solid, white moves towards the kingside, with this thematic manoeuvre of passing from the Q to the attack. 10...♟e8 [10...♞xe5 11.♙xe5!] 11.♟h3↑ ♘f8 12.♞df3 ♞e4 13.♟h5! Black seemed to have shielded himself well against the attack on the kingside, but White found a way to create weaknesses and continue with the initiative. 13...♞g6 14.♟ad1 ♟f8 15.♞d2 ♟e8 16.f3 Indeed, it is necessary to eliminate the strong Ne4 in order to keep up the pressure. 16...♞xd2 17.♟xd2 Black has avoided direct threats, but his position is very passive, while White has a lasting pressure on the castling. 17...f5?! Weakening on the flank where they are worst off. A typical mistake. [17...♟c8 18.g4! c5 19.♟g2] 18.♟h3 ♙d6 19.♞xg6 hxg6 20.♙xd6 cxd6 21.f4 ♘f7 22.g4!↑

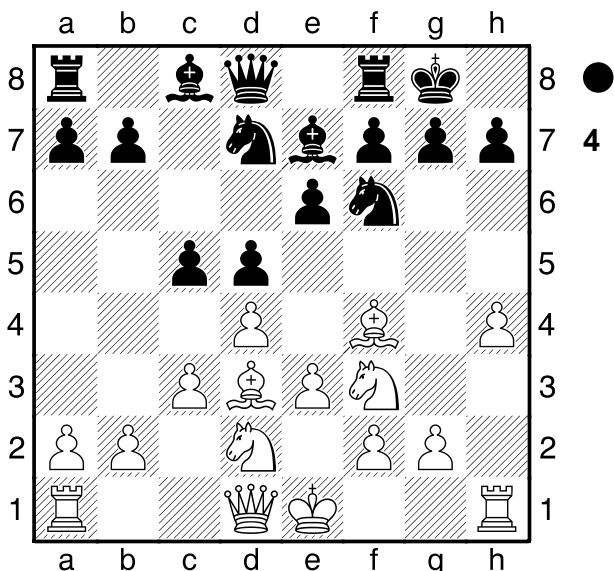


Making magnificent use of the breaking point. 22...♟h8 23.♟g3 ♟e7 24.♟g2 ♟f6 25.♞h1 ♟h7 26.g5 ♟e7 27.h4 ♞e8 28.♟h2 ♞d7 29.♙e2 ♟ah8 30.♞g2 ♙c6 31.♟fh1± Black has achieved a solid position, but by remaining very passive. It is typical that when one side remains passive, the active side decides to alternate the attack between both flanks, as the attacking pieces move more easily to another sector than the passive ones. 31...♞c7 32.♟f2 ♟d7 33.♙f3 ♟c8 34.♞g3 ♙e8 35.♟e2 ♞d8 36.♟c1 ♙c6 37.c4!! Magnificent. With this attacking exchange Black is in big trouble. Note Black's passive R-pawns, which cannot help the defence on the c-file. 37...♟b7 38.♟g2 ♞d7 39.♟c3 ♟a8 40.♟h1 ♟b8 41.cxd5 ♙xd5 42.♟hc1 ♞e8 43.♙xd5 exd5 44.♟c6+– An excellent demonstration of the attacking chances on the kingside that can occur in the London system. jmorenoruiz70@gmail.com 1-0

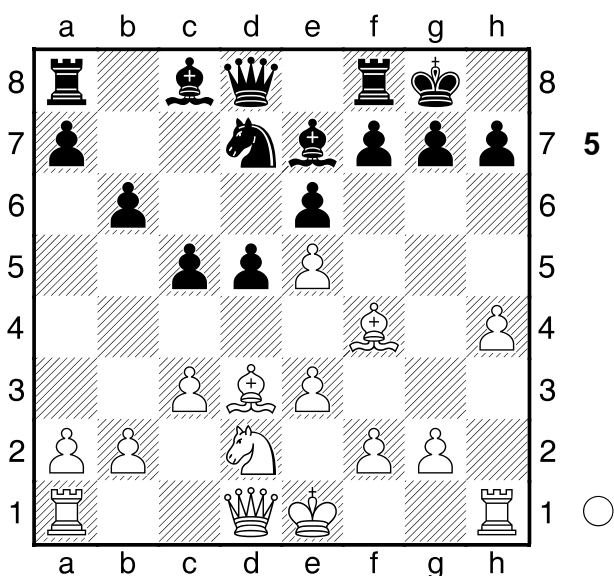
□ Kovacevic,Vlatko
 ■ Ree,Hans
 G03 Maribor
 [Moreno Ruiz,J]

D02

1.d4 ♘f6 2.♘f3 d5 3.♙f4 e6 4.♗bd2 c5 5.e3 ♙e7
 6.c3 0-0?! 7.♙d3 ♗bd7 8.h4!
 [8.♗e5!?]

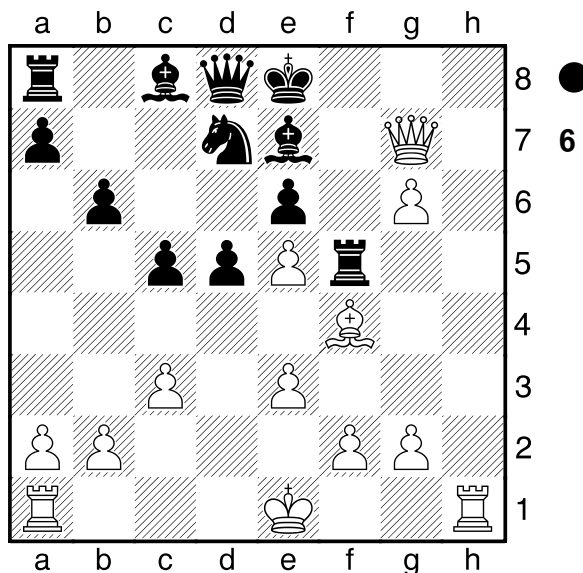


An interesting way to start the attack on the kingside. WHITE DOES NOT NEED TO CASTLE, AND WILL LOOK FOR THE LONG CASTLING IF NECESSARY. 8...b6 9.♗e5 ♗xe5 10.dxe5! Once again this move. Necessary for the plan of attack on the kingside. 10...♗d7



11.♙xh7+?! A spectacular attack, but not really necessary. White could continue his attack in the style of the first game.
 [11.♗h5! Theme to weaken on the kingside. Now white will have breaks on the kingside in any case. g6 (11...h6? 12.♙xh6! gxh6 13.♗h3! ♗xe5

14.♗g3+--; 11...f5 12.g4!→) 12.♗g4 ♙b7 13.h5→]
 11...♙xh7 12.♗h5+ ♗g8 13.♗f3 f6 14.♗g5! fxg5
 15.hxg5 ♗f5
 [15...♙xg5!? 16.♙xg5 ♗e8 17.♗h7+ ♗f7
 18.♗h4+-]
 16.♗h7+ ♗f7
 [16...♙f8 17.♗g6 ♗g8 18.♗xe6+ ♗f7 19.♗h3!+-]
 17.g6+ ♗e8 18.♗xg7±



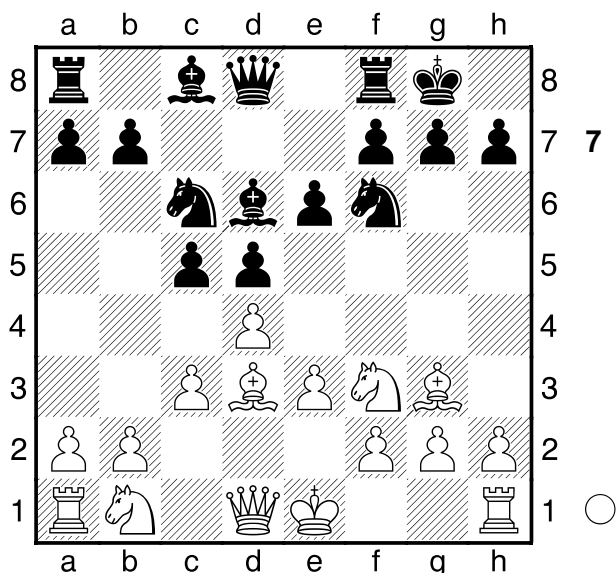
The attack is devastating. Note the safe position of the white king in the centre, with the long castle at his disposal. 18...♙f8 19.♗h8 ♗g5 20.♗g8 ♗xe5 21.♙xe5 ♗d7 22.♗h8 ♙b7 23.♗h7+ jmorenoruiz70@gmail.com
 1-0

□ Djurhuus,Rune
 ■ Poliakov
 G06 ch LAT
 [Moreno Ruiz,J]

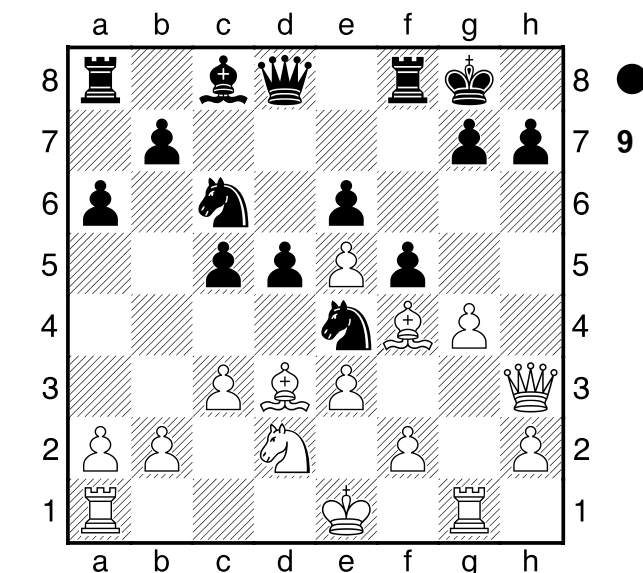
D02

1.d4 d5 2.♘f3 ♘f6 3.♙f4 e6 4.e3 c5 5.c3 ♗c6
 6.♙d3 ♙d6 7.♙g3 0-0?!

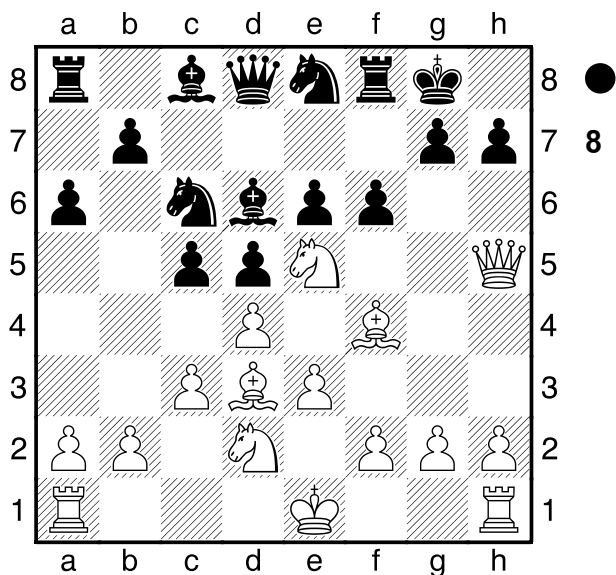
(Diagrama 7)



An imprecise move, and a most typical mistake. White can now develop a dangerous initiative against the black castling, starting the attack with Ne5. **8. ♖bd2 a6 9. ♗e5! ♗e8**
 [9... ♗xe5 10.dxe5 ♗d7 11. ♗f3=]
10. ♗f4 f6 11. ♗h5!



Clearly, the white attacking disposition is quite impressive. **15... ♗xd2 16. ♗xd2 b5 17.gxf5 exf5 18. ♗h6 ♗c7 19.e6 ♗h8 20.e7! ♗g8**
 [20... ♗xe7 21. ♗xc6+-]
21. ♗xg7+ jmorenoruiz70@gmail.com
1-0



Forcing black to create serious weaknesses for himself. **11...f5**
 [11...fxe5?? 12. ♗xh7+ ♗h8 13. ♗g6+ ♗g8 14. ♗h7#]
12.g4! ♗f6 13. ♗h3 ♗xe5 14.dxe5 ♗e4
 [14... ♗xg4 15. ♗g3 ♗c7 16. ♗f3 ♗h8 17.h3 ♗h6 18. ♗xh6 gxh6 19. ♗g1±]
15. ♗g1

(Diagrama 9)