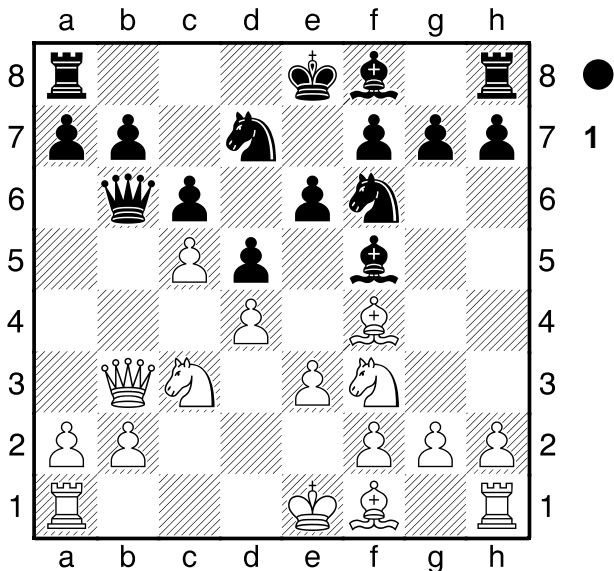
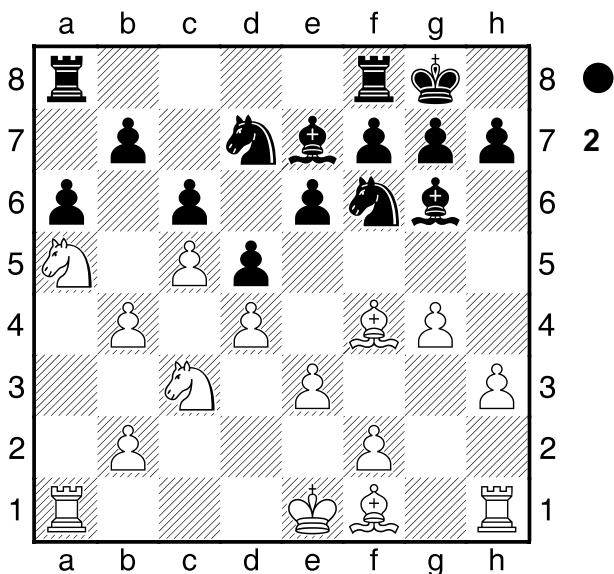


□ Kovacevic,Vlatko **D02**
 ■ Byrne,Robert Eugene **2510**
 Hoogovens Wijk aan Zee (2) **2530**
 [Moreno Ruiz,J] 16.01.1980

1.d4 ♘f6 2.♘f3 d5 3.♙f4 ♙f5 4.e3 c6 Black has planned a Slav disposition. White must be clear about one thing: ATTACK ON THE QUEENSIDE. 5.c4 e6 6.♗c3 ♗bd7 7.♞b3 ♞b6 8.c5!

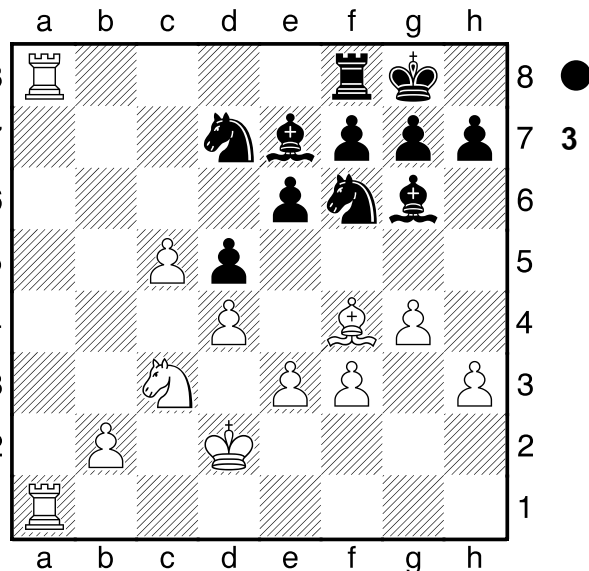


EXCELLENT. White has understood the position perfectly, and has seen that Bf5 is useless to try to attack on the kingside, focusing instead on the QUEENSIDE, where Pb7 is defenceless, and black is missing his queenside B for defence. 8...♞xb3 9.axb3 a6 10.b4 ♙c8 11.h3 ♙e7 12.♗d2 0-0 13.g4 ♙g6 14.♗b3 ♙a8 15.♗a5

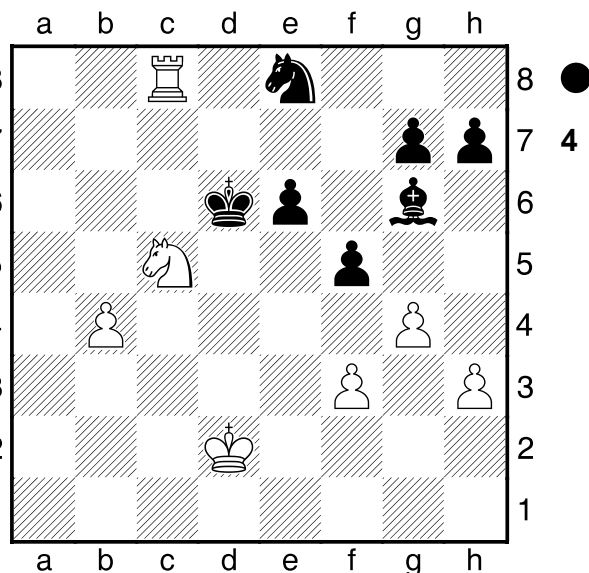


TAKE NOTE OF THIS EXCELLENT PLAN. White has taken the N to a5 where he exerts enormous pressure on the queen's side. 15...♙a7 16.f3 ♙c8 17.♗d2 b6? Black cannot withstand the pressure, as it allows White to make a small combination that guarantees absolute

dominance on the queenside.
 [17...b5 18.♗xc6 ♙xc6 19.♙xb5 ♙c8 20.♙xa6 (20.♙xa6) 20...♙xa6 21.♙xa6 ♙a8 22.♙b7 ♙a7 23.♙c6+-]
18.♙xa6!! ♙xa6 19.♗xc6 ♙xc6
 [19...♙xa1 20.♗xe7+ ♗f8 21.♗xg6+ hxg6 22.♙xa1+-]
20.♙xa6 ♙c8 21.♙ha1± The pressure on the queenside is suffocating. **21...bxc5 22.♙a8 ♙f8 23.bxc5**



Faced with the threat of the Pb advance, black sacrifices material almost in desperation. **23...♗xc5!?**
 [23...h6 24.b4 ♙d8 25.b5 e5 26.♙g3 exd4 27.exd4 ♙e8 28.b6+-]
24.♙xf8+ ♗xf8 25.♙a8+ ♗e8 26.dxc5 ♙xc5 27.♙c8 ♙e7 28.e4 dxe4 29.♗xe4 f6 30.♙d6 f5 31.♙xe7+ ♗xe7 32.♗c5 ♗d6 33.b4



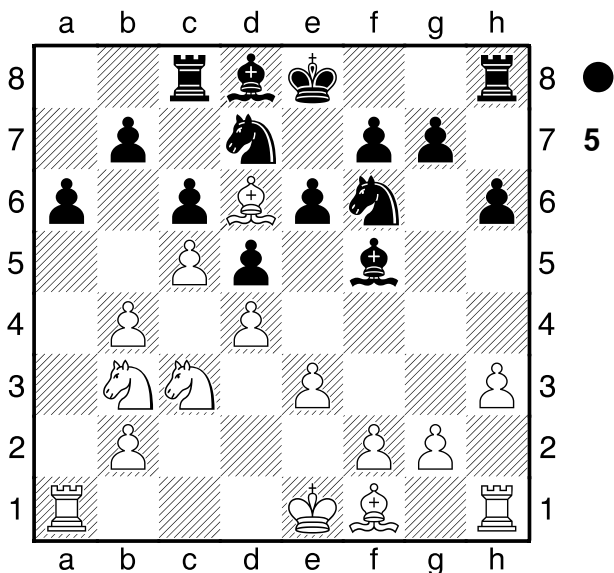
The end is desperate for black. The rest is easy. **33...♗c7 34.♙xc7 ♗xc7 35.♗xe6+ ♗d6 36.♗xg7 fxe6 37.hxg4 ♗d5 38.♗e3 ♗c4 39.f4 ♗xb4 40.f5 ♗f7 41.♗e6 h6 42.♗d8** jmorenoruiz70@gmail.com 1-0

Nikolic, Predrag D02
 Piket, Jeroen 2605
 Hoogovens Wijk aan Zee (7) 2500
 [Moreno Ruiz, J] 01.1989

1. d3 f6 2. d4 d5 3. f4 f5 4. c4 c6 5. e3 e6
6. c3 bd7 7. Bb3 Bb6 8. c5! Bxb3 9. axb3 a6
10. b4± Bc8
 [10...0-0-0? 11. Bxa6!! bxa6? 12. Bxa6# A tactical issue to remember.]

11. h3 h6?!
 [While White can afford the luxury of preparing a retreat for his bishop, 11...h6]

12. d2 e7 13. b3 d8 14. d6!
 [14. a5 Bxa5 (14...c7 15. Bxc7 Bxc7 16. b5! cxb5 17. Bxb5±; 14...e7 15. Bh2!? d8) 15. bxa5 e5!? 16. dxe5 e4 17. Bxe4 Bxe4 And Bf4 is somewhat out of play, and black has some compensation.]



A very precise move. White's dominance on the queenside is remarkable, but BEWARE OF THE BLACK REACTION WITH Pe5. **14... d6**

[14...e7 15. Bh2 d8 16. a5 Bxa5 17. bxa5 e5 18. Ba4 exd4 19. exd4 0-0 20. Bb4 Bfe8+ 21. d2 dxe4+ 22. Bxe4 Bxe4 23. f3 Bde8 24. Bxb7±]

15. dxe4 Bxe4 16. f3 e6 17. a5 Bxa5 18. bxa5!
 A sad necessity, as the king has to come to the defence of Pb7. **19. Ba4 Ba8 20. Bb4 c8 21. h4!**
 Having condemned Black to passivity on the queenside, White seeks to open a second front on the kingside. **21... h5 22. Bb3?! e5 23. Bg3 g6 24. d2 Be8**

[24... Bg8]

25. Bg5! f6? Weakening decisively on the kingside.

26. Bg3 g5 27. d3!

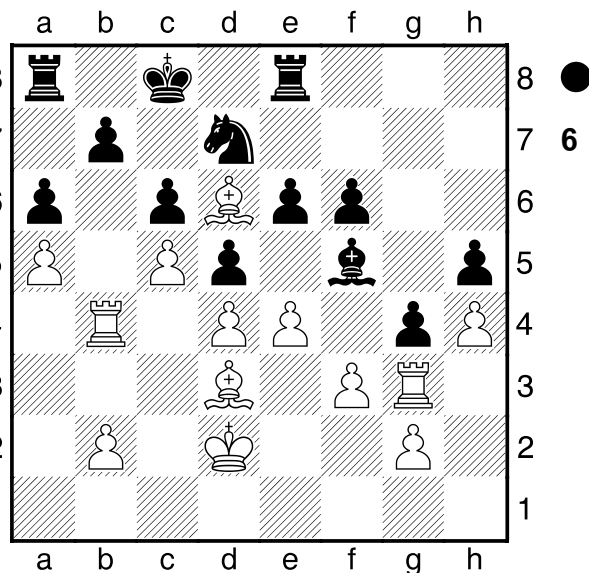
[27. hxg5]

27... g4

[27... gxh4 28. Bg7±]

28. e4

(Diagrama 6)

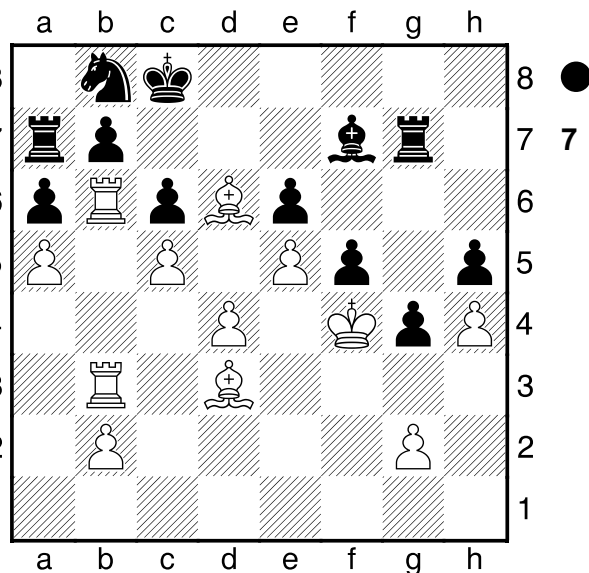


AN IMPRESSIVE POSITION. White is hitting all over the board. The pressure on the queenside has served to suffocate the black pieces, BUT IT DOES NOT WIN BY ITSELF. YOU HAVE TO SEEK TO OPEN UP PLAY ALL OVER THE BOARD SO THAT THE PASSIVE PIECES ON THE BLACK QUEENSIDE ARE NOTICED.

28... dxe4

[Another concession, but on 28... Bg6 29. exd5 Bxd3 30. dxc6! wins.]

29. fxe4 e6 30. c2! f5 31. e5 Bg8 32. Bgb3 Ba7 33. d3 Threat Rxb7 **33... b8** The culmination of White's opening strategy. Every Black piece is passive while White is ready to bring his only inactive piece into the game. **34. e3! Bg7 35. e4 f7 36. Bb6**



Position of complete strategic dominance. All black pieces are passive, and the zugzwang flies in the air.

36... e8 37. d5! cxd5 38. Bxb8 Bxb8 39. Bxe6 e4
 All black pawns fall down. **40. Bb4 g3 41. Bxf5 d7 42. Bg6**

A MODEL GAME OF THE LONDON-SLAV GAME WITH WHITE. jmorenoruiz70@gmail.com
1-0