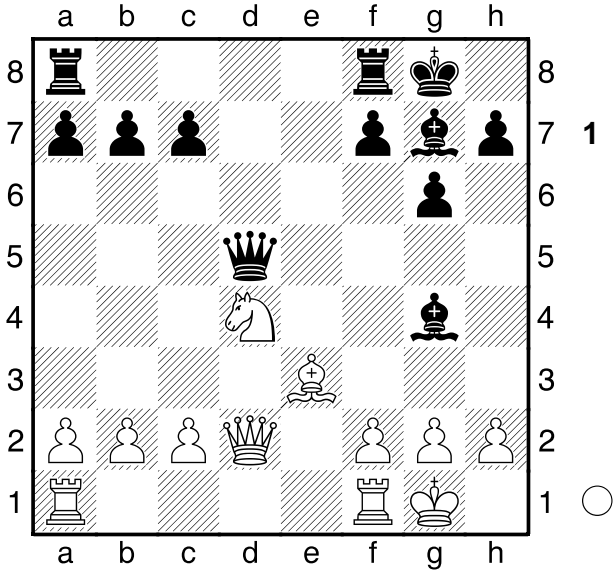


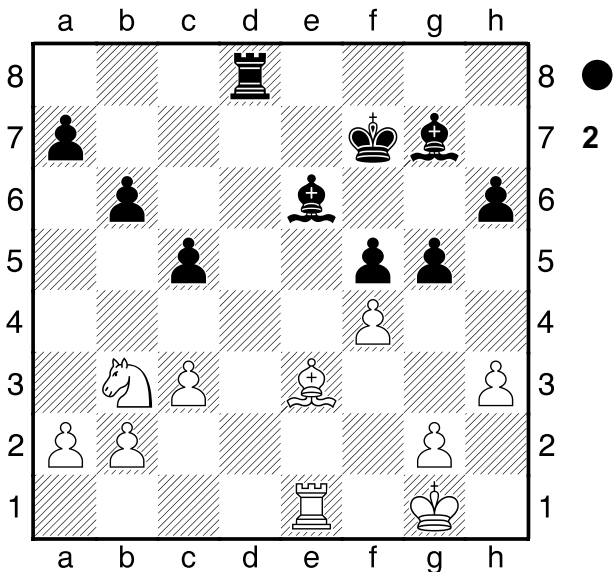
□ Englisch, Berthold
 ■ Steinitz, William
 London

C60
 1883

STRATEGIC THEME: Pair of bishops. 1.e4 e5 2.♘f3 ♘c6 3.♗b5 g6!? 4.d4?! exd4 5.♘xd4 ♗g7 6.♗e3 ♘f6 7.♘c3 0-0 8.0-0 ♘e7! 9.♖d2?! d5! 10.exd5 ♘exd5 11.♘xd5 ♗xd5 12.♗e2 ♘g4! 13.♗xg4 ♗xg4



THE FIRST STEP is to restrict the enemy knight by timely pawn advances. 14.♘b3 ♗xd2 15.♘xd2 ♖ad8 16.c3 ♖fe8 17.♘b3 b6! 18.h3 ♗e6 19.♖fd1 c5! Magnificent. White's Nb3 is passive. THE SECOND STEP IS TO GAIN SPACE BY ADVANCING THE PAWNS, TO FORCE THE APPEARANCE OF A WEAKNESS IN THE OPPONENT'S POSITION. 20.♗g5 f6 21.♗f4 ♘f7 22.f3 g5! 23.♖xd8 ♖xd8 24.♗e3 h6 25.♖e1 f5 26.f4?!

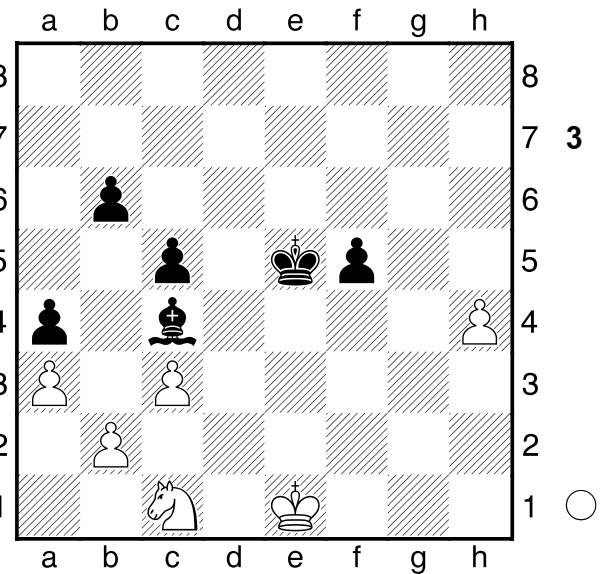


At last white has been weakened! This leaves Pf4 in need of assistance, and opens up an invasion path to the king via e6-d5-e4, after the exchange of rooks.

26...♗f6 27.g3 a5 28.♘c1 [28.♘xc5 bxc5 29.♗xc5 ♖d2 30.♗a3 ♗xa2 (30...♗d5)]

28...a4! 29.a3 ♗c4 Magnificent the white N is absolutely passive. Now THE THIRD STAGE IS TO FORCE A FAVOURABLE SWITCH OF ONE BISHOP FOR THE OTHER OR FOR THE HORSE, AND COME TO A FAVOURABLE ENDING OF BISHOPS, OR BISHOP AGAINST HORSE. 30.♘f2 gxf4 31.♗xf4 ♗g5! Third phase. Black exchanges the bishop for the other, and arrives at a position of bishop against knight, in which the white knight is absolutely passive. 32.♗xg5 hxg5

33.♘e3 ♘f6 34.h4? [34.♘e2 ♖d3+ 35.♘f2 ♖d2!-+ And the black rook takes all the pawns.] 34...gxh4 35.gxh4 ♖e8+! 36.♘f2 ♖xe1 37.♘e1 ♘e5-+



The THIRD STAGE HAS BEEN SUCCESSFULLY CONCLUDED. Black's enormous advantage is obvious because of his very active king and bishop, while his white counterparts are reduced to passivity on the front rank. The white situation is a losing one, as the Ph4 has no salvation, and with so few pieces that minus pawn can be decisive. 38.♘e2 The only possible knight move, even if it leads to an ending where the super-active black king is decisive.

[38.♘f2 ♘f4] 38...♗xe2! 39.♘xe2 ♘f4 40.c4 ♘g4 41.♘e3 Hoping for a serious mistake, but... 41...f4+! [41...♘xh4?? 42.♘f4!+- And White wins.]

42.♘e4 [42.♘f2 ♘xh4 And Black wins easily.] 42...f3 43.♘e3 ♘g3 And they coronate much earlier 0-1