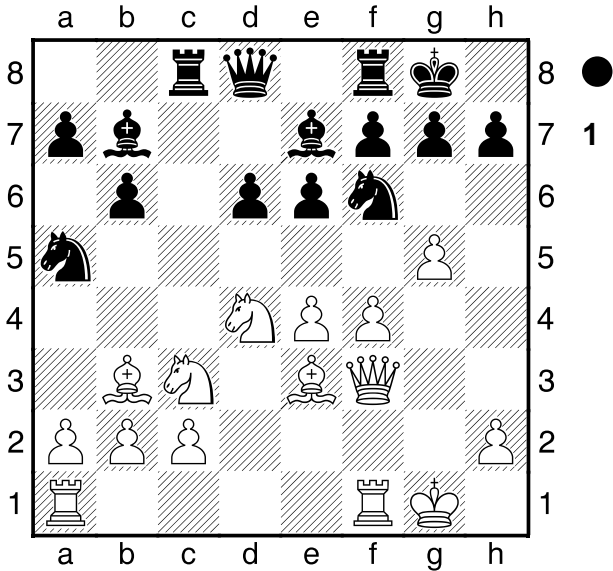


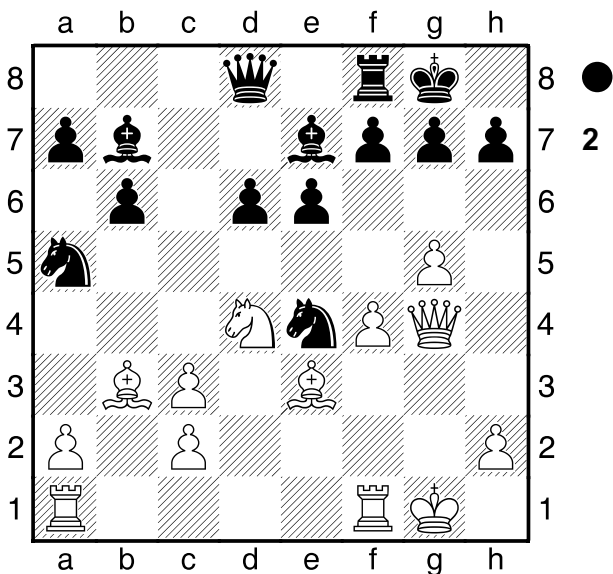
B88

□ Padevsky, Nikola Bochev  
 ■ Botvinnik, Mikhail  
 Alekhine Memorial-01 (6) 17.10.1956

Topic: Sacrifice Rxc3 in the Sicilian. 1.e4 c5 2.♘f3 ♘c6 3.d4 cxd4 4.♗xd4 ♗f6 5.♗c3 d6 6.♙c4 e6 7.0-0 ♙e7 8.♙e3 0-0 9.♙b3 ♖a5 10.f4 b6 11.♚f3?! [11.e5! ♗e8 12.f5! dxe5 13.fxe6 ♗xb3 14.♗c6 ♚d6 15.♚xd6 ♙xd6 16.axb3 ♙xe6 17.♗b5± (17.♙xa7!?) ] 11...♙b7 12.g4 ♙c8 13.g5

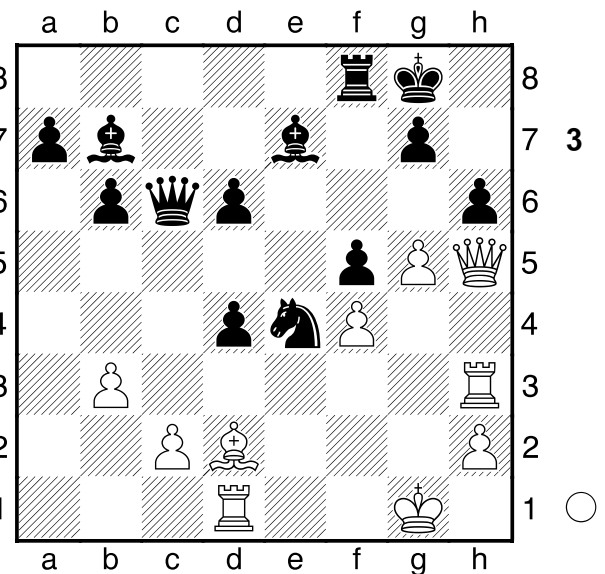


On the surface White has a threatening attack, but Black responds with a central counterplay, which shows that White's attack is premature. 13...♙xc3!! 14.bxc3?! [14.gxf6 ♙xe3 15.♚xe3 (15.fxe7 ♙xf3 16.exd8 ♙xf1+ 17.♙xf1 ♙xd8-+) 15...♙xf6± 16.♙ad1 ♗xb3 17.axb3 a6± Rubanov-Borisenko,G/corr/1960/ ] 14...♗xe4 15.♚g4



Black has gained a notable advantage in the centre and has spoiled the queenside pawns, as well as attacking chances along the great white diagonal, but the white

pieces are active and must be played accurately. 15...♙c8! [15...♗xc3? 16.f5→] 16.♙f3 [16.f5 e5 17.♗f3 (17.f6 ♙xg4+??) 17...♗xb3 18.axb3 ♙xc3 19.♙ae1 d5 20.f6 ♙c5± (White attack gives no result) ] 16...♗xb3 17.axb3 f5! 18.♚h4 [18.gxf6!? ♙xf6 19.f5 exf5 20.♗xf5 ♙f8 Δ Rg6/ 21.♗h6+? ♙xh6 22.♚xc8 ♙g6+!± ] 18...e5! 19.♙h3 h6 20.♚h5 [20.♗e2 exf4 21.♙xf4 ♗xg5 ] 20...♙xc3 Black counterplay develops rapidly 21.♙d1 exd4 22.♙d2 [22.gxh6 dxe3 23.hxg7 ♙xg7+--+ ] [22.♙xd4 ♙xc2 23.gxh6 ♗f6--+ ] 22...♙c6!-+



The central counterplay is faster than the white attack on the kingside. Quite typical. 23.gxh6 ♗g5 [23...♗f6 24.♙g6 ♙h1+ 25.♗f2 ♗g4+ 26.♗e2 ♙g2+ 27.♗d3 ♗f2+ 28.♗xd4 ♙xg6-+] 24.♙g3 ♙h1+ 25.♗f2 ♗e4+ Once again, the attack through the centre came first. 26.♗e2 ♗xg3+--+ [26...♙a6+--+ ] 27.hxg3 ♙xh5+ 0-1